

Keilor Heights Primary School (4877)

2007 School Level Report

Please check the data in this report. If, after comparing it with your own records, you deem it to be incorrect or incomplete, follow the directions on the web page below:

- <http://www.sofweb.vic.edu.au/standards>, then click on '**Accountability and Improvement**', then click on '**School Performance Reports**'.
-
-

Contents

| | Page No. |
|---|-----------------|
| Privacy | 3 |
| SFO Density and LBOTE | 4 |
| Assessment of Reading Prep to Year 2 | 5-6 |
| Teacher Judgments against the VELs | 7-15 |
| AIM Reading | 16 |
| AIM Number | 17 |
| Teacher Assessment of Student Progress (PSD students) | 18-19 |
| Enrolments | 20 |
| Student Absence | 21 |
| Parent Opinion | 22-23 |
| Staff Opinion | 24 |
| Staff Sick Leave | 25 |
| Teaching Staff Retention | 26 |
| Bank Balances | 27 |

Privacy

When reporting on the school's performance to the school community, care must be taken to avoid the disclosure of information that can directly or indirectly identify an individual. This may be a particular issue when reporting on the achievement of specific cohorts of students or the opinions of staff where there are small numbers.

In situations where confidentiality cannot be assured, schools may wish to report on the mean result or provide a written comment on school, year level or cohort performance.

Where the School Level Report is provided to school council members as part of any annual reporting process, or used for discussion on a school's performance, such as in consultation with the school community in the school self-evaluation process, it is important to remind school community members of their duty to only use this information for the purpose it was provided, and that the material must be kept confidential.

It is important to note that information that identifies an individual or can be used with other readily available information to identify a person is now protected by the *Information Privacy Act 2000* (<http://www.education.vic.gov.au/about/deptpolicies/informationprivacy.htm>).

SFO Density and LBOTE

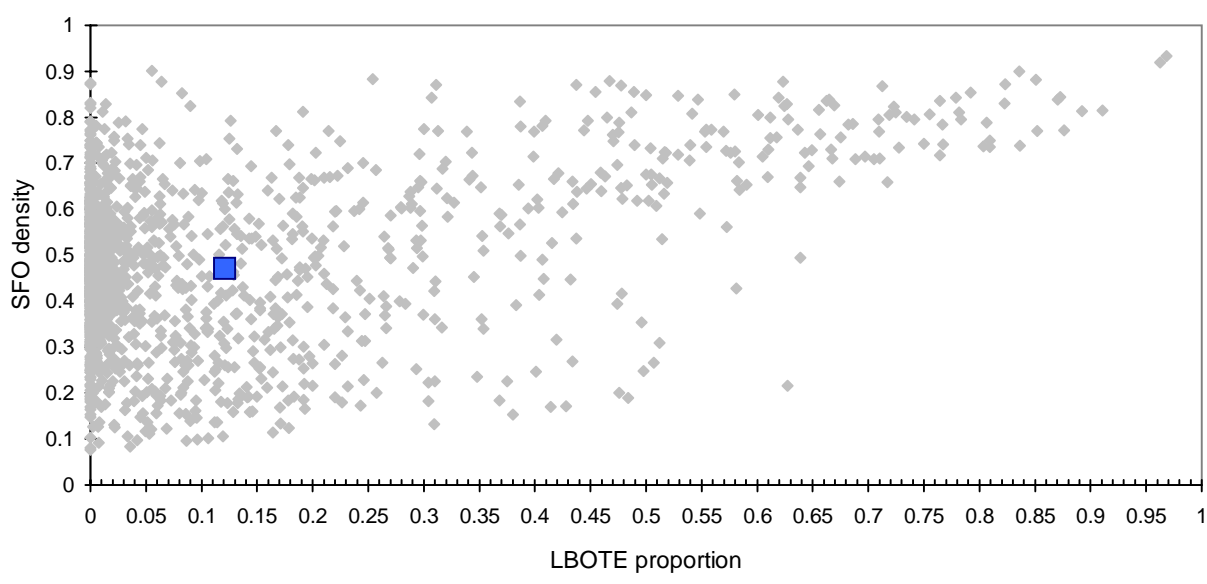
School no: 4877

School name: Keilor Heights Primary School

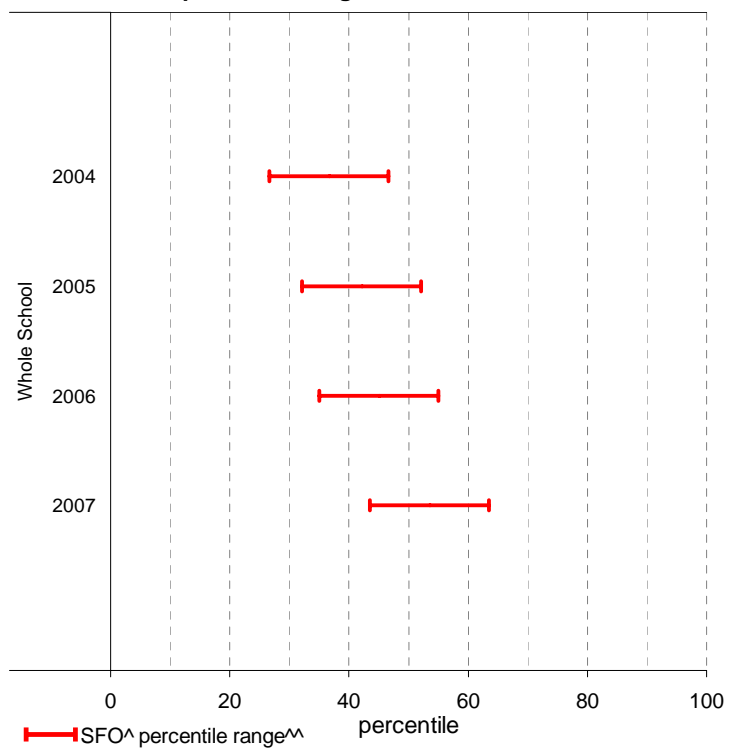
Explanation: The chart below plots the school's 2007 SFO (Student Family Occupation) density[^] and LBOTE (Language Background Other Than English) proportion* against that of all government schools. This school is highlighted as a square on the chart.

| | 2000 | 2001 | 2002 | 2003 | 2004 | 2005 | 2006 | 2007 |
|----------------------------|------|------|------|------|------|------|------|------|
| SFO density [^] : | | | | | 0.55 | 0.50 | 0.49 | 0.47 |
| LBOTE proportion*: | 0.27 | 0.26 | 0.25 | 0.24 | 0.15 | 0.15 | 0.15 | 0.12 |

School's 2007 SFO density and LBOTE proportion against that of all government schools



School's SFO[^] percentile range^{^^} over time



Notes: [^] The higher the SFO density, the lower the SFO percentile, the lower the socio-economic status (SES).
^{^^} The school's SFO percentile range shows the 20% of schools with an SFO Density most like this school.
* From 2007, a student is LBOTE if either the student or one parent/guardian speaks a language other than English at home. Prior to 2007, a student is LBOTE if the student or one of the parents was born in a non-English speaking country.

Assessment of Reading: Prep to Year 2

School no: 4877

School name: Keilor Heights Primary School

Explanation: Students' ability to read unsighted text is assessed at the end of each year. The data presented here includes 'deemed not capable' students.

More detailed information (including data where deemed not capable students are excluded) is available in the Assessment of Reading report, available from the School Performance Reports website.

Source of data: Data transmitted from school to DEECD via an online web-form.

| | Prep | | | | | | | | | | Year 1 | | | | | | | | | | Year 2 | | | | | | | | | | | | |
|-------------------------|-------------|--------------|-------------|-------------|-------------|--------------|-------------|-------------|-------------|-------------|-------------|-------------|--------------|-------------|--------------|-------------|-------------|-------------|--------------|-------------|--------------|-------------|-------------|--------------|-------------|--------------|-------------|--------------|-------------|--------------|-------------|--------------|-------------|
| | School | | | | | | | | | State | School | | | | | | | | | State | School | | | | | | | | | State | | | |
| | 2003 | | 2004 | | 2005 | | 2006 | | 2007 | | 2007 | 2003 | | 2004 | | 2005 | | 2006 | | 2007 | | 2007 | 2003 | | 2004 | | 2005 | | 2006 | | 2007 | | 2007 |
| | (No.) | % | (No.) | % | (No.) | % | (No.) | % | (No.) | % | % | (No.) | % | (No.) | % | (No.) | % | (No.) | % | (No.) | % | % | (No.) | % | (No.) | % | (No.) | % | (No.) | % | % | | |
| Level 1 | | | | | | | | | | | | | | | | | | | | | | | | | | | | | | | | | |
| 100% | (24) | 66.7 | (23) | 51.1 | (23) | 60.5 | (27) | 67.5 | (26) | 59.1 | 68.1 | (35) | 81.4 | (38) | 100.0 | (40) | 93.0 | (34) | 89.5 | (35) | 94.6 | 94.9 | | | | | | | | | | | |
| 90-99% | (12) | 33.3 | (18) | 40.0 | (15) | 39.5 | (11) | 27.5 | (16) | 36.4 | 26.2 | (8) | 18.6 | | | (2) | 4.7 | (4) | 10.5 | (2) | 5.4 | 4.4 | | | | | | | | | | | |
| 80-89% | | | (2) | 4.4 | | | | | | | 2.5 | | | | (1) | 2.3 | | | | | 0.3 | | | | | | | | | | | | |
| 51-79% | | | (2) | 4.4 | | | (2) | 5.0 | (2) | 4.5 | 1.6 | | | | | | | | | | 0.2 | | | | | | | | | | | | |
| 50% or below | | | | | | | | | | | 1.7 | | | | | | | | | | 0.3 | | | | | | | | | | | | |
| Total | (36) | 100.0 | (45) | 100.0 | (38) | 100.0 | (40) | 100.0 | (44) | 100.0 | 100.0 | (43) | 100.0 | (38) | 100.0 | (43) | 100.0 | (38) | 100.0 | (37) | 100.0 | 100.0 | | | | | | | | | | | |
| Subtotal 90-100% | (36) | 100.0 | (41) | 91.1 | (38) | 100.0 | (38) | 95.0 | (42) | 95.5 | 94.3 | (43) | 100.0 | (38) | 100.0 | (42) | 97.7 | (38) | 100.0 | (37) | 100.0 | 99.3 | | | | | | | | | | | |
| Level 5 | | | | | | | | | | | | | | | | | | | | | | | | | | | | | | | | | |
| 100% | (20) | 55.6 | (15) | 33.3 | (18) | 47.4 | (15) | 37.5 | (18) | 40.9 | 44.5 | (25) | 58.1 | (23) | 60.5 | (24) | 55.8 | (26) | 68.4 | (26) | 70.3 | 82.0 | (34) | 77.3 | (32) | 71.1 | (31) | 67.4 | (28) | 70.0 | (31) | 77.5 | 90.9 |
| 90-99% | (15) | 41.7 | (21) | 46.7 | (20) | 52.6 | (23) | 57.5 | (22) | 50.0 | 35.9 | (16) | 37.2 | (15) | 39.5 | (18) | 41.9 | (12) | 31.6 | (11) | 29.7 | 15.9 | (10) | 22.7 | (13) | 28.9 | (15) | 32.6 | (12) | 30.0 | (9) | 22.5 | 8.6 |
| 80-89% | (1) | 2.8 | (1) | 2.2 | | | | | (2) | 4.5 | 5.2 | | | | | | | | | | 0.6 | | | | | | | | | | | | |
| 51-79% | | | (6) | 13.3 | | | (1) | 2.5 | (2) | 4.5 | 3.9 | | | | (1) | 2.3 | | | | | 0.4 | | | | | | | | | | | | |
| 50% or below | | | (2) | 4.4 | | | (1) | 2.5 | | | 10.5 | (2) | 4.7 | | | | | | | | 1.1 | | | | | | | | | | | | |
| Total | (36) | 100.0 | (45) | 100.0 | (38) | 100.0 | (40) | 100.0 | (44) | 100.0 | 100.0 | (43) | 100.0 | (38) | 100.0 | (43) | 100.0 | (38) | 100.0 | (37) | 100.0 | 100.0 | (44) | 100.0 | (45) | 100.0 | (46) | 100.0 | (40) | 100.0 | (40) | 100.0 | 100.0 |
| Subtotal 90-100% | (35) | 97.2 | (36) | 80.0 | (38) | 100.0 | (38) | 95.0 | (40) | 90.9 | 80.4 | (41) | 95.3 | (38) | 100.0 | (42) | 97.7 | (38) | 100.0 | (37) | 100.0 | 97.9 | (44) | 100.0 | (45) | 100.0 | (46) | 100.0 | (40) | 100.0 | (40) | 100.0 | 99.5 |
| Level 15 | | | | | | | | | | | | | | | | | | | | | | | | | | | | | | | | | |
| 100% | (2) | 5.6 | | | (1) | 2.5 | (1) | 2.3 | | | 37.6 | (4) | 9.3 | (14) | 36.8 | (5) | 11.6 | (8) | 21.1 | (4) | 10.8 | 49.1 | (17) | 38.6 | (12) | 26.7 | (17) | 37.0 | (8) | 20.0 | (11) | 27.5 | 64.1 |
| 90-99% | (18) | 50.0 | (9) | 20.0 | (12) | 31.6 | (13) | 32.5 | (18) | 40.9 | 49.1 | (33) | 76.7 | (21) | 55.3 | (31) | 72.1 | (28) | 73.7 | (29) | 78.4 | 49.1 | (26) | 59.1 | (30) | 66.7 | (28) | 60.9 | (32) | 80.0 | (29) | 72.5 | 32.3 |
| 80-89% | (4) | 11.1 | (11) | 24.4 | (5) | 13.2 | (10) | 25.0 | (4) | 9.1 | 6.1 | (4) | 9.3 | (3) | 7.9 | (5) | 11.6 | (2) | 5.3 | (4) | 10.8 | 6.1 | (1) | 2.3 | (2) | 4.4 | (1) | 2.2 | | | | 1.8 | |
| 51-79% | | | (6) | 13.3 | (3) | 7.9 | (4) | 10.0 | (8) | 18.2 | 2.9 | | | | | (1) | 2.3 | | | | 2.9 | | | | | | | | | | | | |
| 50% or below | (12) | 33.3 | (19) | 42.2 | (18) | 47.4 | (12) | 30.0 | (13) | 29.5 | 4.3 | (2) | 4.7 | | | (1) | 2.3 | | | | 4.3 | | | | | | | | | | | | |
| Total | (36) | 100.0 | (45) | 100.0 | (38) | 100.0 | (40) | 100.0 | (44) | 100.0 | 100.0 | (43) | 100.0 | (38) | 100.0 | (43) | 100.0 | (38) | 100.0 | (37) | 100.0 | 100.0 | (44) | 100.0 | (45) | 100.0 | (46) | 100.0 | (40) | 100.0 | (40) | 100.0 | 100.0 |
| Subtotal 90-100% | (20) | 55.6 | (9) | 20.0 | (12) | 31.6 | (14) | 35.0 | (19) | 43.2 | 86.7 | (37) | 86.0 | (35) | 92.1 | (36) | 83.7 | (36) | 94.7 | (33) | 89.2 | 86.7 | (43) | 97.7 | (42) | 93.3 | (45) | 97.8 | (40) | 100.0 | (40) | 100.0 | 96.4 |
| Level 20 | | | | | | | | | | | | | | | | | | | | | | | | | | | | | | | | | |
| 100% | (3) | 8.3 | | | (1) | 2.6 | (1) | 2.5 | (2) | 4.5 | | (9) | 20.9 | (5) | 13.2 | (2) | 4.7 | (4) | 10.5 | (4) | 10.8 | | (14) | 31.8 | (6) | 13.3 | (18) | 39.1 | (6) | 15.0 | (8) | 20.0 | 48.8 |
| 90-99% | (11) | 30.6 | (7) | 15.6 | (9) | 23.7 | (11) | 27.5 | (17) | 38.6 | | (25) | 58.1 | (28) | 73.7 | (27) | 62.8 | (31) | 81.6 | (29) | 78.4 | | (28) | 63.6 | (35) | 77.8 | (26) | 56.5 | (32) | 80.0 | (31) | 77.5 | 46.0 |
| 80-89% | (2) | 5.6 | (2) | 4.4 | (2) | 5.3 | (2) | 5.0 | (1) | 2.3 | | (4) | 9.3 | (5) | 13.2 | (5) | 11.6 | (3) | 7.9 | (2) | 5.4 | | (2) | 4.5 | (3) | 6.7 | (1) | 2.2 | (2) | 5.0 | (1) | 2.5 | 2.5 |
| 51-79% | | | | | | | | | (3) | 6.8 | | | | | | (2) | 4.7 | | | (2) | 5.4 | | | | | | | | | | | | 0.9 |
| 50% or below | (20) | 55.6 | (36) | 80.0 | (26) | 68.4 | (26) | 65.0 | (21) | 47.7 | | (5) | 11.6 | | | (7) | 16.3 | | | (2) | 5.4 | | | | | | | | | | | | 1.8 |
| Total | (36) | 100.0 | (45) | 100.0 | (38) | 100.0 | (40) | 100.0 | (44) | 100.0 | 100.0 | (43) | 100.0 | (38) | 100.0 | (43) | 100.0 | (38) | 100.0 | (37) | 100.0 | 100.0 | (44) | 100.0 | (45) | 100.0 | (46) | 100.0 | (40) | 100.0 | (40) | 100.0 | 100.0 |
| Subtotal 90-100% | (14) | 38.9 | (7) | 15.6 | (10) | 26.3 | (12) | 30.0 | (19) | 43.2 | 86.7 | (34) | 79.1 | (33) | 86.8 | (29) | 67.4 | (35) | 92.1 | (33) | 89.2 | 86.7 | (42) | 95.5 | (41) | 91.1 | (44) | 95.7 | (38) | 95.0 | (39) | 97.5 | 94.8 |

| | 2003 | 2004 | 2005 | 2006 | 2007 | 2003 | 2004 | 2005 | 2006 | 2007 | 2003 | 2004 | 2005 | 2006 | 2007 |
|--|------|------|------|------|------|------|------|------|------|------|------|------|------|------|------|
| No. of students DNC ¹ : | 0 | 0 | 0 | 2 | 1 | 2 | 0 | 1 | 0 | 0 | 0 | 2 | 1 | 0 | 0 |
| No. of students at risk ² : | 0 | 4 | 0 | 2 | 2 | 2 | 0 | 1 | 0 | 0 | 1 | 3 | 1 | 0 | 0 |

Notes:

¹ Students can be DNC (deemed not capable) only if they meet one of the conditions (insufficient English, receiving D&I funding, insufficient attendance at the school or referred from Reading Recovery) AND read below the minimum standard.

² The number of students at risk is the number of students reading at less than 90% accuracy at Level 1 for Prep, Level 5 for Year 1 or Level 15 for Year 2.

Assessment of Reading: Prep to Year 2

School no: 4877

School name: Keilor Heights Primary School

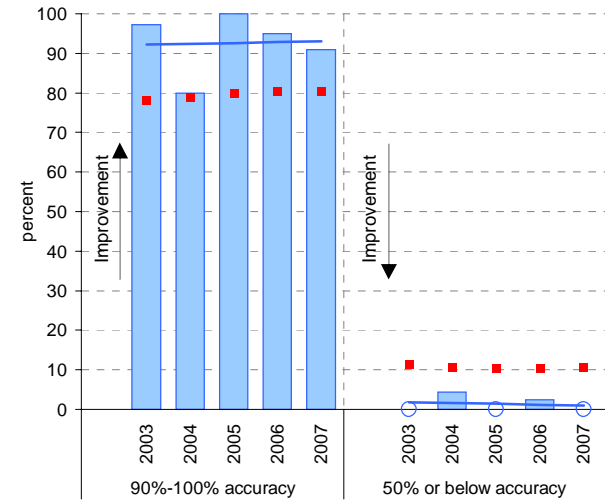
Explanation: Students' ability to read unsighted text is assessed at the end of each year.

Source of data: Data transmitted from school to DEECD via an online web-form.

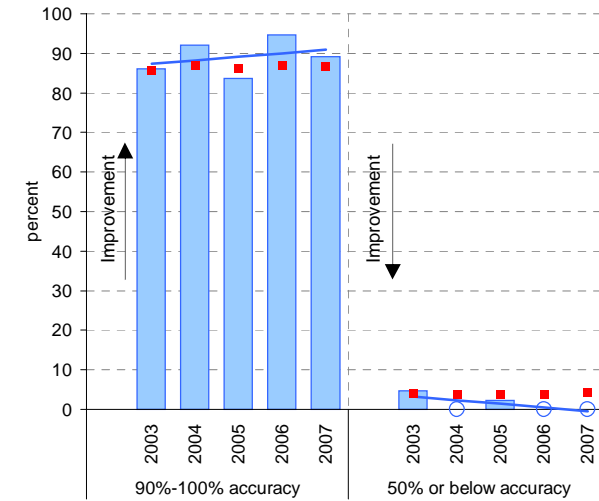
Notes: * The school trendline is being trialled. It is only plotted when there is data for each calendar year.

^ This data is highly skewed, with a lot of schools obtaining the best possible result, particularly in Year 2. The maximum achievable percentile is therefore significantly less than 100.

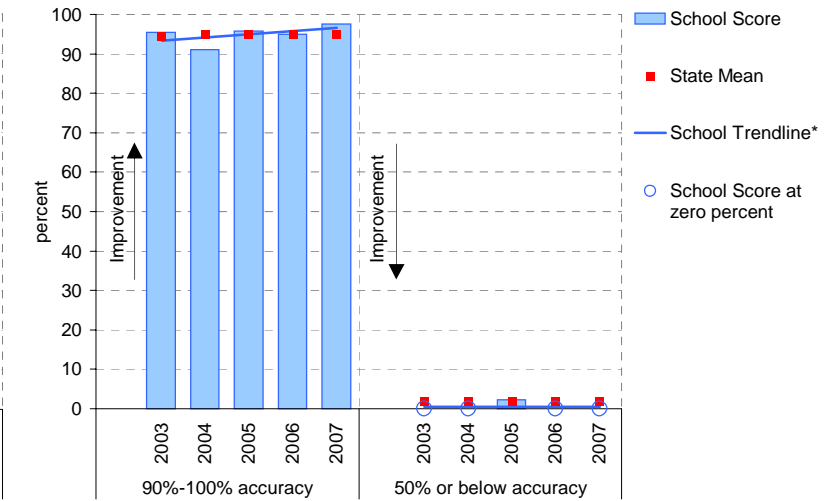
Year level: Prep
Text level: Level 5



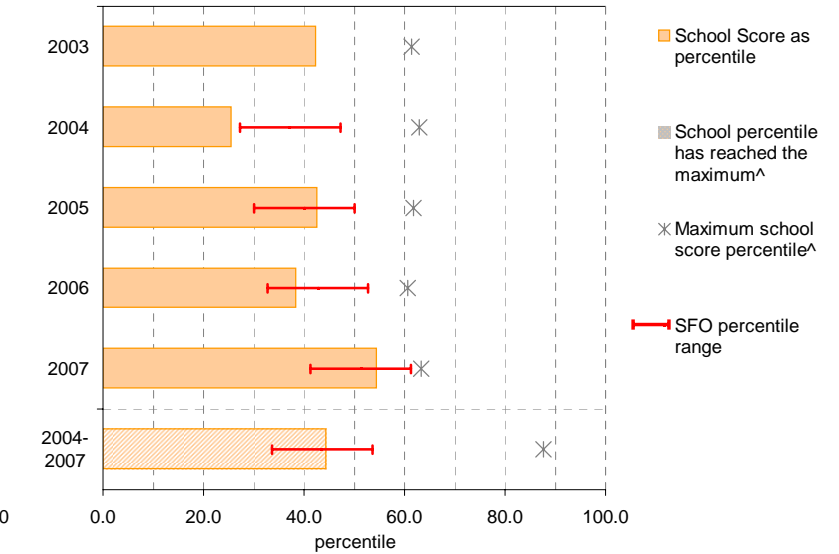
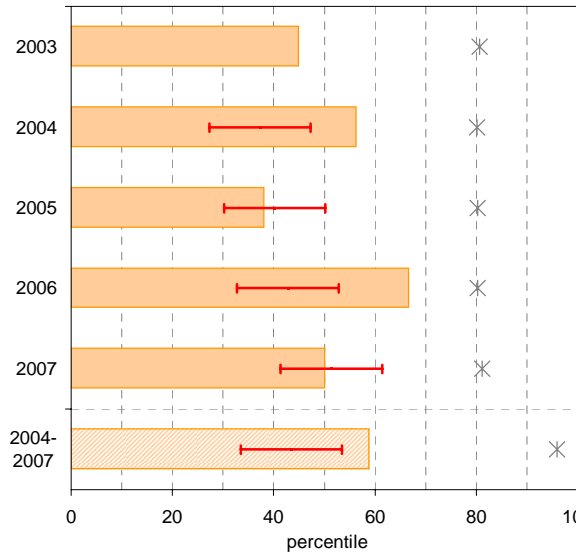
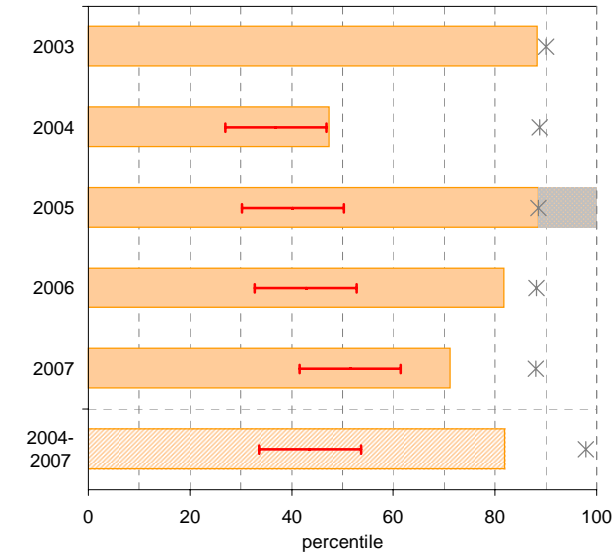
Year level: Year 1
Text level: Level 15



Year level: Year 2
Text level: Level 20



90%-100% accuracy as percentile against SFO percentile range



Teacher Judgments against the VELS - Year levels Prep-6 combined

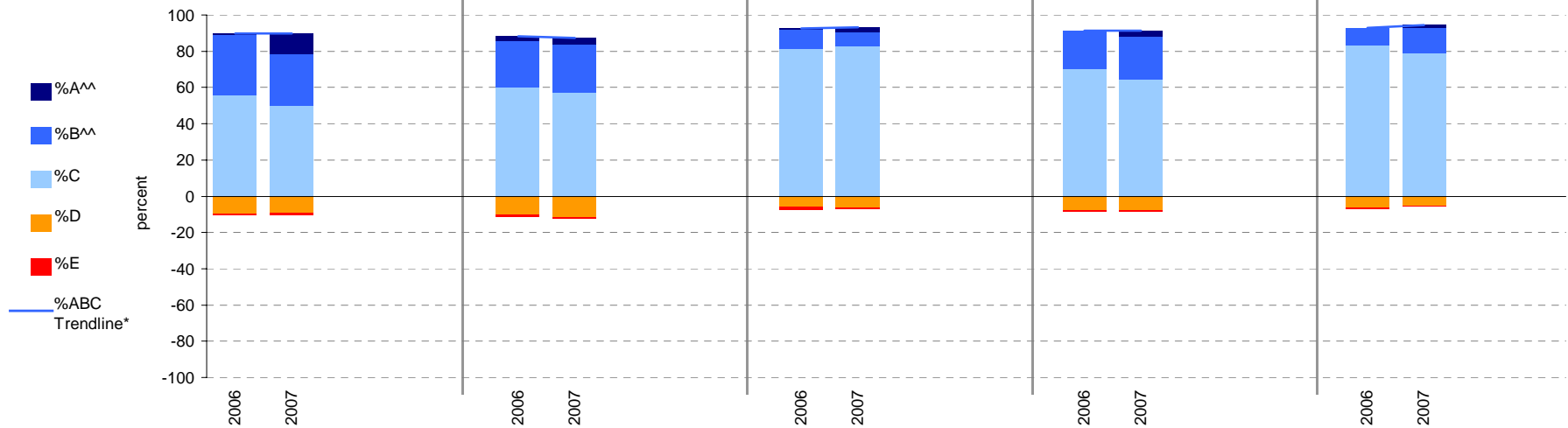
School no: 4877

School name: Keilor Heights Primary School

Source of data: Data retrieved electronically from CASES21.

Explanation: Teacher judgments of student progress against the VELS.

| Year Levels: | Reading | | | | | | | Writing | | | | | Speaking & Listening | | | | | Number | | | | | Measurement, Chance & Data | | | | | | | | |
|--------------|----------------|-------|-------|-----|-----|-----|----------------|---------|-------|-----|-----|-----|----------------------|-------|-------|-----|-----|--------|----------------|-------|-------|-----|----------------------------|-----|----------------|-------|-------|-----|-----|-----|---|
| | total students | % A^^ | % B^^ | % C | % D | % E | total students | % A^^ | % B^^ | % C | % D | % E | total students | % A^^ | % B^^ | % C | % D | % E | total students | % A^^ | % B^^ | % C | % D | % E | total students | % A^^ | % B^^ | % C | % D | % E | |
| Prep-6 | 2006 | 300 | 1 | 33 | 56 | 10 | 1 | 300 | 3 | 25 | 60 | 10 | 1 | 300 | 1 | 11 | 81 | 6 | 2 | 300 | 0 | 21 | 70 | 8 | 1 | 300 | 0 | 10 | 83 | 6 | 1 |
| (combined) | 2007 | 293 | 11 | 28 | 50 | 9 | 1 | 293 | 4 | 26 | 57 | 12 | 1 | 293 | 3 | 8 | 83 | 6 | 0 | 293 | 3 | 24 | 65 | 8 | 1 | 293 | 2 | 14 | 79 | 5 | 0 |



Notes: * The school trendline is being trialled. It is only plotted when there is data for each calendar year.
 ^^ The cutoff between grades A and B changed in 2007. Further information is available on the following website:
<http://www.education.vic.gov.au/studentlearning/studentreports/schools/whatsnew.htm>.

Teacher Judgments against the VELS - English (primary)

School no: 4877

School name: Keilor Heights Primary School

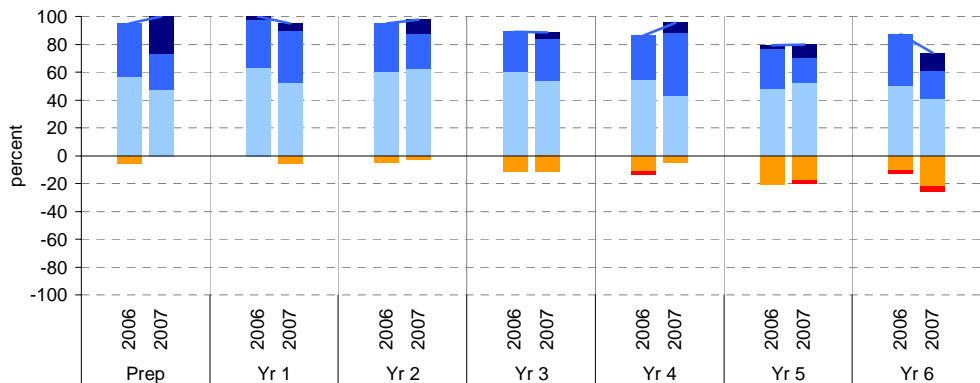
Source of data: Data retrieved electronically from CASES21.

Explanation: Teacher judgments of student progress against the VELS.

Notes: * The school trendline is being trialled. It is only plotted when there is data for each calendar year.
 ** In 2006, approx. 850 schools assessed their students against the 0.25 VELS scale. 2006 benchmarks are therefore based on a subset of schools. 2007 benchmarks will be calculated in August, when data from all schools has been submitted.
 ^ Percentiles for 2007 will be calculated in August, when data from all schools has been submitted.
 ^^ The cutoff between grades A and B changed in 2007. Further information is available on the following website: <http://www.education.vic.gov.au/studentlearning/studentreports/schools/whatsnew.htm>.

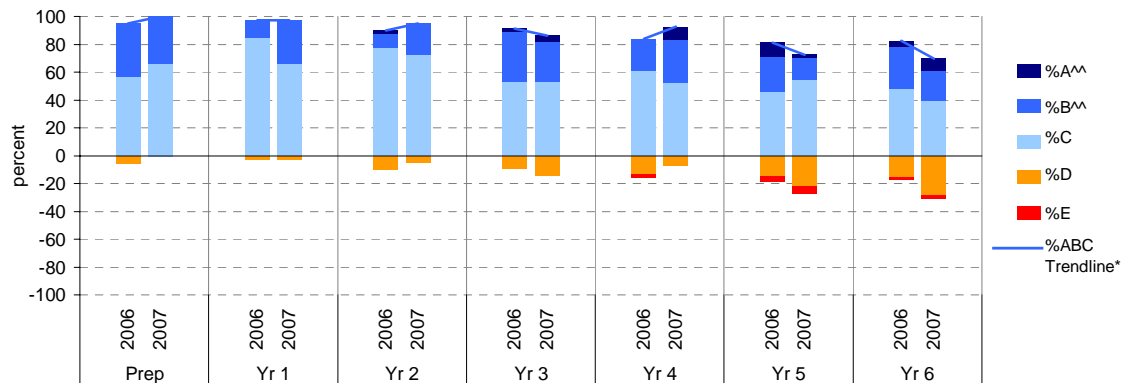
Reading

| | total students | % of students by grade | | | | | Mean Score | | | total students | % of students by grade | | | | | Mean Score | | |
|------|----------------|------------------------|-----------------|----|----|----|------------|---------------------|------|----------------|------------------------|-----------------|----|----|----|------------|---------------------|------|
| | | A ^{^^} | B ^{^^} | C | D | E | School | State ^{**} | | | A ^{^^} | B ^{^^} | C | D | E | School | State ^{**} | |
| Yr 4 | 2006 | 39 | 0 | 38 | 56 | 5 | 0 | 1.05 | 1.01 | 2006 | 44 | 0 | 32 | 55 | 11 | 2 | 2.98 | 2.96 |
| | 2007 | 44 | 27 | 25 | 48 | 0 | 0 | 1.16 | | 2007 | 42 | 7 | 45 | 43 | 5 | 0 | 3.10 | |
| Yr 5 | 2006 | 38 | 3 | 34 | 63 | 0 | 0 | 1.63 | 1.57 | 2006 | 48 | 2 | 29 | 48 | 21 | 0 | 3.42 | 3.44 |
| | 2007 | 38 | 5 | 37 | 53 | 5 | 0 | 1.59 | | 2007 | 40 | 10 | 18 | 53 | 18 | 3 | 3.38 | |
| Yr 6 | 2006 | 40 | 0 | 35 | 60 | 5 | 0 | 2.04 | 2.04 | 2006 | 46 | 0 | 37 | 50 | 11 | 2 | 3.96 | 3.94 |
| | 2007 | 40 | 10 | 25 | 63 | 3 | 0 | 2.08 | | 2007 | 46 | 13 | 20 | 41 | 22 | 4 | 3.91 | |
| Yr 3 | 2006 | 45 | 0 | 29 | 60 | 11 | 0 | 2.53 | 2.49 | | | | | | | | | |
| | 2007 | 43 | 5 | 30 | 53 | 12 | 0 | 2.51 | | | | | | | | | | |



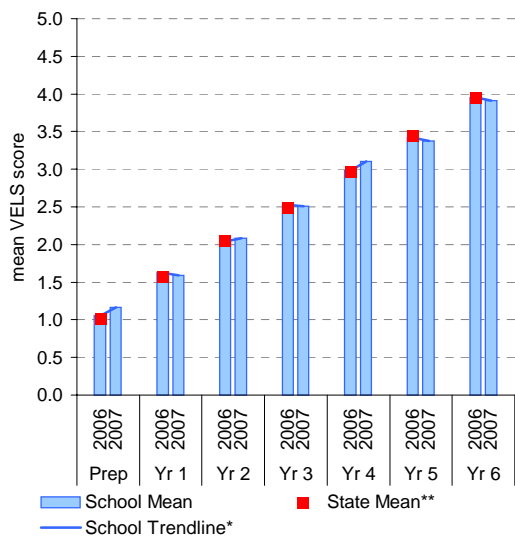
Writing

| | total students | % of students by grade | | | | | Mean Score | | | total students | % of students by grade | | | | | Mean Score | | |
|------|----------------|------------------------|-----------------|----|----|----|------------|---------------------|------|----------------|------------------------|-----------------|----|----|----|------------|---------------------|------|
| | | A ^{^^} | B ^{^^} | C | D | E | School | State ^{**} | | | A ^{^^} | B ^{^^} | C | D | E | School | State ^{**} | |
| Yr 4 | 2006 | 39 | 0 | 38 | 56 | 5 | 0 | 0.99 | 0.97 | 2006 | 44 | 0 | 23 | 61 | 14 | 2 | 2.93 | 2.89 |
| | 2007 | 44 | 0 | 34 | 66 | 0 | 0 | 1.05 | | 2007 | 42 | 10 | 31 | 52 | 7 | 0 | 3.07 | |
| Yr 5 | 2006 | 38 | 0 | 13 | 84 | 3 | 0 | 1.50 | 1.47 | 2006 | 48 | 10 | 25 | 46 | 15 | 4 | 3.47 | 3.38 |
| | 2007 | 38 | 0 | 32 | 66 | 3 | 0 | 1.55 | | 2007 | 40 | 3 | 15 | 55 | 23 | 5 | 3.30 | |
| Yr 6 | 2006 | 40 | 3 | 10 | 78 | 10 | 0 | 1.96 | 1.95 | 2006 | 46 | 4 | 30 | 48 | 15 | 2 | 3.96 | 3.88 |
| | 2007 | 40 | 0 | 23 | 73 | 5 | 0 | 1.99 | | 2007 | 46 | 9 | 22 | 39 | 28 | 2 | 3.88 | |
| Yr 3 | 2006 | 45 | 2 | 36 | 53 | 9 | 0 | 2.55 | 2.42 | | | | | | | | | |
| | 2007 | 43 | 5 | 28 | 53 | 14 | 0 | 2.50 | | | | | | | | | | |

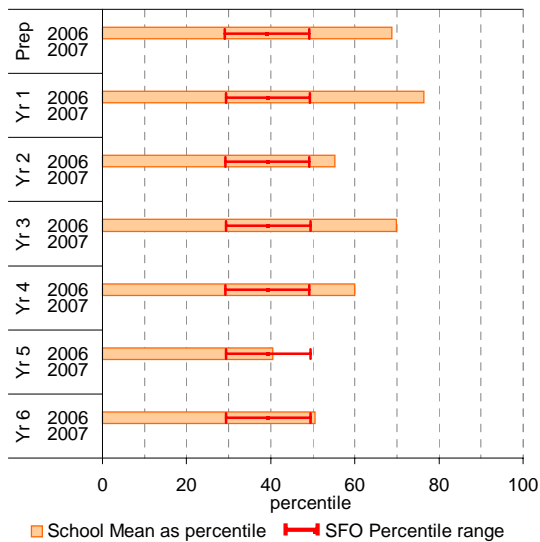


Reading

School Mean against State Mean

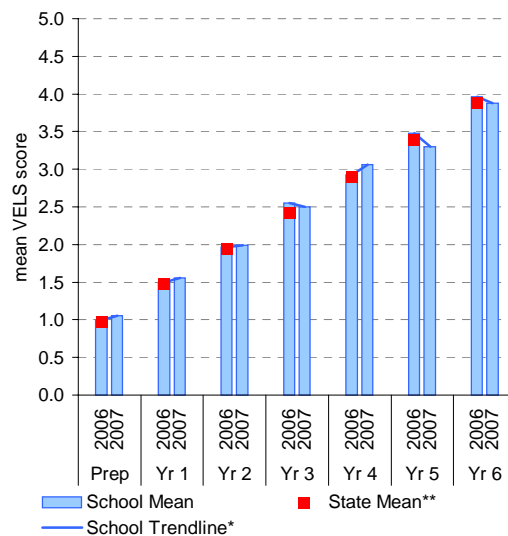


School Mean as percentile against SFO percentile range^

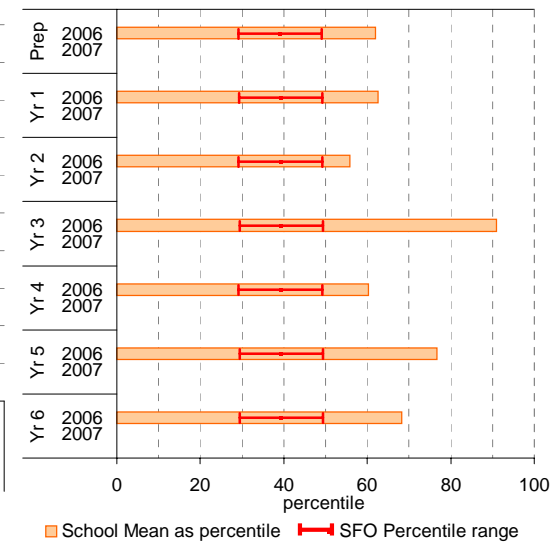


Writing

School Mean against State Mean



School Mean as percentile against SFO percentile range^



Teacher Judgments against the VELS - English (primary)

School no: 4877

School name: Keilor Heights Primary School

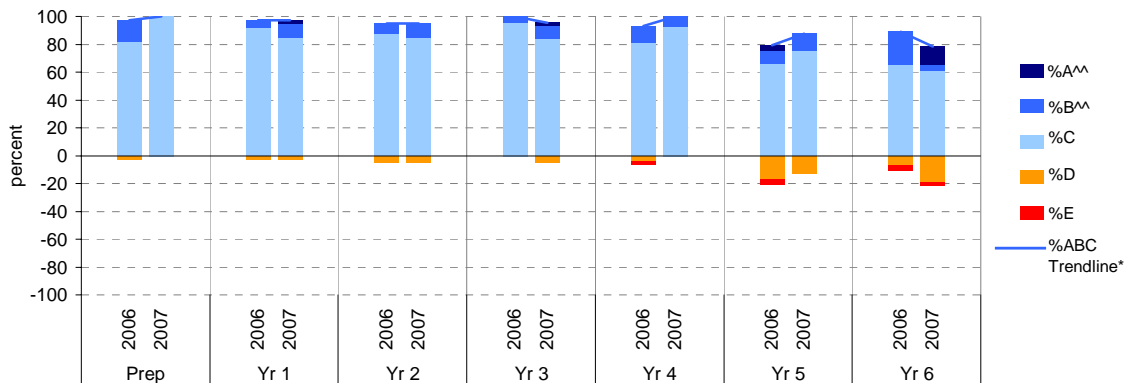
Source of data: Data retrieved electronically from CASES21.

Explanation: Teacher judgments of student progress against the VELS.

Notes: * The school trendline is being trialled. It is only plotted when there is data for each calendar year.
 ** In 2006, approx. 850 schools assessed their students against the 0.25 VELS scale. 2006 benchmarks are therefore based on a subset of schools. 2007 benchmarks will be calculated in August, when data from all schools has been submitted.
 ^ Percentiles for 2007 will be calculated in August, when data from all schools has been submitted.
 ^^ The cutoff between grades A and B changed in 2007. Further information is available on the following website:
<http://www.education.vic.gov.au/studentlearning/studentreports/schools/whatsnew.htm>.

Speaking and Listening

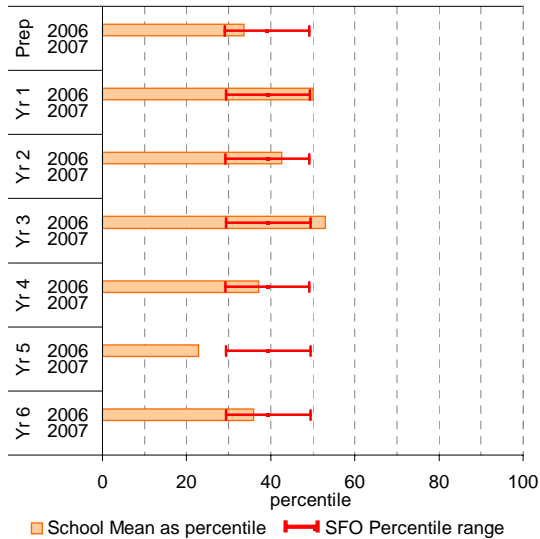
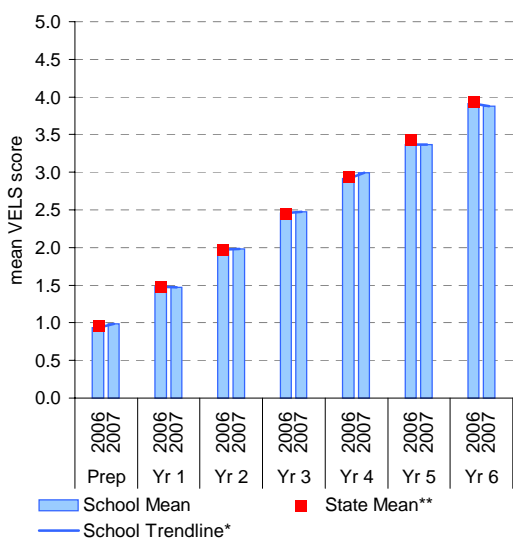
| | total students | % of students by grade | | | | | Mean Score | | | total students | % of students by grade | | | | | Mean Score | | | |
|-------------|----------------|------------------------|-----|----|-----|---|------------|---------|------|----------------|------------------------|-----|----|----|----|------------|---------|------|------|
| | | A^^ | B^^ | C | D | E | School | State** | | | A^^ | B^^ | C | D | E | School | State** | | |
| Yr 1 Prep | 2006 | 39 | 0 | 15 | 82 | 3 | 0 | 0.94 | 0.97 | Yr 4 | 2006 | 44 | 0 | 11 | 82 | 5 | 2 | 2.92 | 2.94 |
| | 2007 | 44 | 0 | 0 | 100 | 0 | 0 | 0.99 | | | 2007 | 42 | 0 | 7 | 93 | 0 | 0 | 2.99 | |
| Yr 2 | 2006 | 38 | 0 | 5 | 92 | 3 | 0 | 1.48 | 1.48 | Yr 5 | 2006 | 48 | 4 | 8 | 67 | 17 | 4 | 3.36 | 3.43 |
| | 2007 | 38 | 3 | 11 | 84 | 3 | 0 | 1.47 | | | 2007 | 40 | 0 | 13 | 75 | 13 | 0 | 3.37 | |
| Yr 3 | 2006 | 40 | 0 | 8 | 88 | 5 | 0 | 1.97 | 1.98 | Yr 6 | 2006 | 46 | 0 | 24 | 65 | 7 | 4 | 3.91 | 3.93 |
| | 2007 | 40 | 0 | 10 | 85 | 5 | 0 | 1.98 | | | 2007 | 46 | 13 | 4 | 61 | 20 | 2 | 3.88 | |
| Yr 3 | 2006 | 45 | 0 | 4 | 96 | 0 | 0 | 2.46 | 2.45 | | | | | | | | | | |
| | 2007 | 43 | 2 | 9 | 84 | 5 | 0 | 2.48 | | | | | | | | | | | |



Speaking and Listening

School Mean against State Mean

School Mean as percentile against SFO percentile range^



Teacher Judgments against the VELS - Mathematics (primary)

School no: 4877

School name: Keilor Heights Primary School

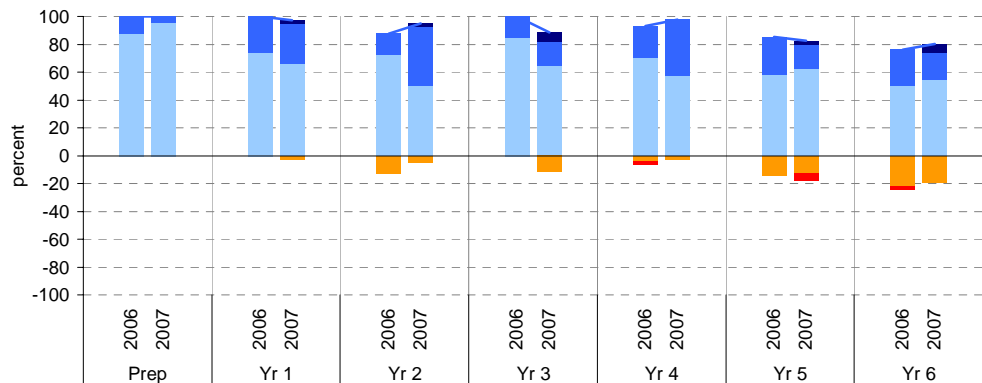
Source of data: Data retrieved electronically from CASES21.

Explanation: Teacher judgments of student progress against the VELS.

Notes: * The school trendline is being trialled. It is only plotted when there is data for each calendar year.
 ** In 2006, approx. 850 schools assessed their students against the 0.25 VELS scale. 2006 benchmarks are therefore based on a subset of schools. 2007 benchmarks will be calculated in August, when data from all schools has been submitted.
 ^ Percentiles for 2007 will be calculated in August, when data from all schools has been submitted.
 ^^ The cutoff between grades A and B changed in 2007. Further information is available on the following website:
<http://www.education.vic.gov.au/studentlearning/studentreports/schools/whatsnew.htm>.

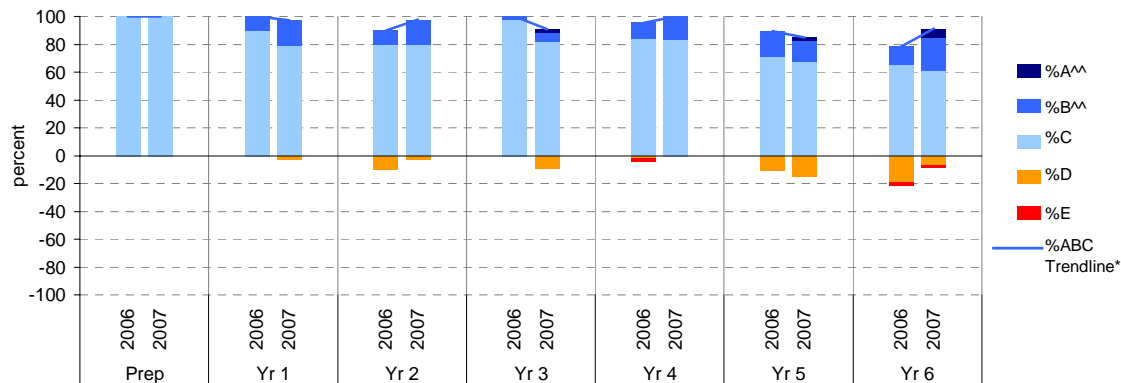
Number

| | total students | % of students by grade | | | | | Mean Score | | | total students | % of students by grade | | | | | Mean Score | | |
|------|----------------|------------------------|-----|----|----|----|------------|---------|------|----------------|------------------------|-----|----|----|----|------------|---------|------|
| | | A^^ | B^^ | C | D | E | School | State** | | | A^^ | B^^ | C | D | E | School | State** | |
| Yr 4 | 2006 | 39 | 0 | 13 | 87 | 0 | 0 | 1.02 | 1.00 | 2006 | 44 | 0 | 23 | 70 | 5 | 2 | 2.95 | 2.95 |
| | 2007 | 44 | 0 | 5 | 95 | 0 | 0 | 1.01 | | 2007 | 42 | 0 | 40 | 57 | 2 | 0 | 3.05 | |
| Yr 5 | 2006 | 38 | 0 | 26 | 74 | 0 | 0 | 1.53 | 1.51 | 2006 | 48 | 0 | 27 | 58 | 15 | 0 | 3.44 | 3.43 |
| | 2007 | 38 | 3 | 29 | 66 | 3 | 0 | 1.55 | | 2007 | 40 | 3 | 18 | 63 | 13 | 5 | 3.37 | |
| Yr 6 | 2006 | 40 | 0 | 15 | 73 | 13 | 0 | 1.97 | 1.99 | 2006 | 46 | 0 | 26 | 50 | 22 | 2 | 3.88 | 3.93 |
| | 2007 | 40 | 3 | 43 | 50 | 5 | 0 | 2.05 | | 2007 | 46 | 7 | 20 | 54 | 20 | 0 | 3.91 | |
| Yr 3 | 2006 | 45 | 0 | 16 | 84 | 0 | 0 | 2.48 | 2.46 | | | | | | | | | |
| | 2007 | 43 | 7 | 16 | 65 | 12 | 0 | 2.47 | | | | | | | | | | |



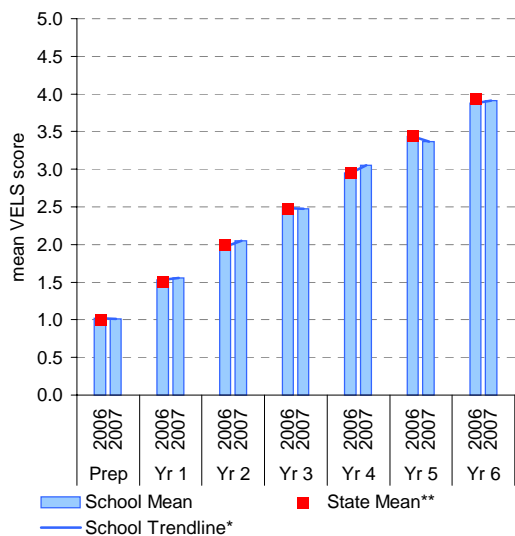
Measurement, Chance and Data

| | total students | % of students by grade | | | | | Mean Score | | | total students | % of students by grade | | | | | Mean Score | | |
|------|----------------|------------------------|-----|----|-----|----|------------|---------|------|----------------|------------------------|-----|----|----|----|------------|---------|------|
| | | A^^ | B^^ | C | D | E | School | State** | | | A^^ | B^^ | C | D | E | School | State** | |
| Yr 4 | 2006 | 44 | 0 | 0 | 100 | 0 | 0 | 0.96 | 0.97 | 2006 | 44 | 0 | 11 | 84 | 2 | 2 | 2.97 | 2.94 |
| | 2007 | 44 | 0 | 0 | 100 | 0 | 0 | 1.00 | | 2007 | 42 | 0 | 17 | 83 | 0 | 0 | 3.02 | |
| Yr 5 | 2006 | 38 | 0 | 11 | 89 | 0 | 0 | 1.51 | 1.48 | 2006 | 48 | 0 | 19 | 71 | 10 | 0 | 3.40 | 3.42 |
| | 2007 | 38 | 0 | 18 | 79 | 3 | 0 | 1.52 | | 2007 | 40 | 3 | 15 | 68 | 15 | 0 | 3.38 | |
| Yr 6 | 2006 | 40 | 0 | 10 | 80 | 10 | 0 | 1.98 | 1.97 | 2006 | 46 | 0 | 13 | 65 | 20 | 2 | 3.82 | 3.92 |
| | 2007 | 40 | 0 | 18 | 80 | 3 | 0 | 2.01 | | 2007 | 46 | 7 | 24 | 61 | 7 | 2 | 3.97 | |
| Yr 3 | 2006 | 45 | 0 | 2 | 98 | 0 | 0 | 2.49 | 2.45 | | | | | | | | | |
| | 2007 | 43 | 2 | 7 | 81 | 9 | 0 | 2.43 | | | | | | | | | | |

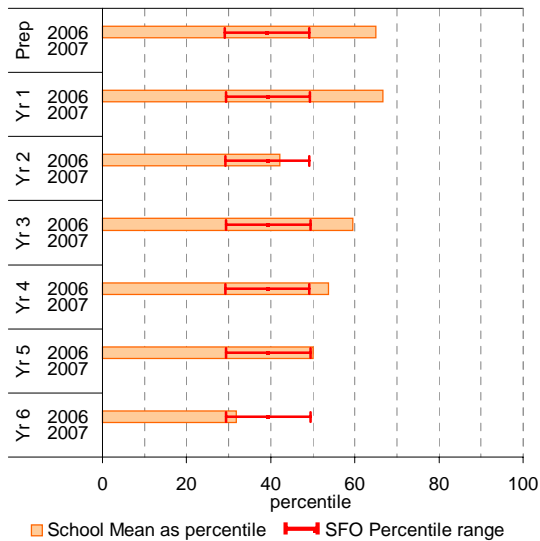


Number

School Mean against State Mean

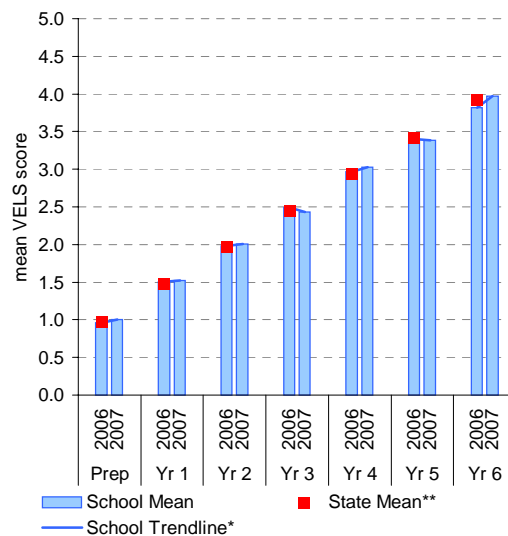


School Mean as percentile against SFO percentile range^

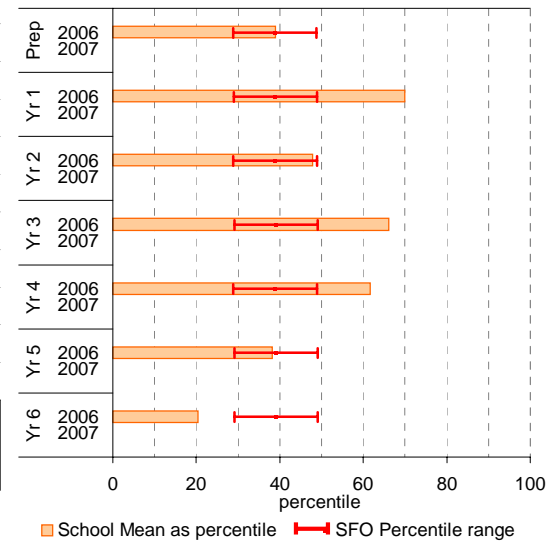


Measurement, Chance and Data

School Mean against State Mean



School Mean as percentile against SFO percentile range^



Teacher Judgments against the VELS - English (primary)

School no: 4877
School name: Keilor Heights Primary School
Source of data: Data retrieved electronically from CASES21.
Explanation: Teacher judgments of student progress against the VELS.

Writing

| Year Level | Year | Total ¹ | Assessed ² | Level 1 | | | | Level 2 | | | | Level 3 | | | | Level 4 | | | | Level 5 | | | | Level 6 | | | | Level 6E | | | School mean | State mean* | Difference between school and state mean* |
|------------|------|--------------------|-----------------------|---------|------|------|------|----------|------|------|------|-----------|------|------|------|-----------|------|------|------|---------|------|------|------|---------|------|------|------|----------|------|--|-------------|-------------|---|
| | | | | 0.00 | 0.50 | 1.00 | 1.25 | 1.50 | 1.75 | 2.00 | 2.25 | 2.50 | 2.75 | 3.00 | 3.25 | 3.50 | 3.75 | 4.00 | 4.25 | 4.50 | 4.75 | 5.00 | 5.25 | 5.50 | 5.75 | 6.00 | 6.25 | 6.50 | 6.75 | | | | |
| prep | 2007 | 44 | 44 | 3 26 | | | | 15 | | | | | | | | | | | | | | | | | | | 1.05 | | | | | | |
| prep | 2006 | 39 | 39 | 2 4 18 | | | | 15 | | | | | | | | | | | | | | | | | | | 0.99 | 0.97 | 0.03 | | | | |
| yr1 | 2007 | 38 | 38 | 1 | | | | 2 23 12 | | | | | | | | | | | | | | | | | | | 1.55 | | | | | | |
| prep | 2005 | | | | | | | | | | | | | | | | | | | | | | | | | | | | | | | | |
| yr1 | 2006 | 38 | 38 | 1 | | | | 3 29 5 | | | | | | | | | | | | | | | | | | | 1.50 | 1.47 | 0.03 | | | | |
| yr2 | 2007 | 40 | 40 | | | | | 1 1 6 23 | | | | 9 | | | | | | | | | | | | | | | 1.99 | | | | | | |
| prep | 2004 | | | | | | | | | | | | | | | | | | | | | | | | | | | | | | | | |
| yr1 | 2005 | | | | | | | | | | | | | | | | | | | | | | | | | | | | | | | | |
| yr2 | 2006 | 40 | 40 | | | | | 1 3 4 27 | | | | 4 1 | | | | | | | | | | | | | | | 1.96 | 1.95 | 0.02 | | | | |
| yr3 | 2007 | 43 | 43 | | | | | 2 4 | | | | 4 19 12 | | | | 2 | | | | | | | | | | | 2.50 | | | | | | |
| yr1 | 2004 | | | | | | | | | | | | | | | | | | | | | | | | | | | | | | | | |
| yr2 | 2005 | | | | | | | | | | | | | | | | | | | | | | | | | | | | | | | | |
| yr3 | 2006 | 45 | 45 | | | | | 4 | | | | 4 20 14 2 | | | | 1 | | | | | | | | | | | 2.55 | 2.42 | 0.13 | | | | |
| yr4 | 2007 | 42 | 42 | | | | | | | | | 3 4 18 | | | | 13 4 | | | | | | | | | | | 3.07 | | | | | | |
| yr2 | 2004 | | | | | | | | | | | | | | | | | | | | | | | | | | | | | | | | |
| yr3 | 2005 | | | | | | | | | | | | | | | | | | | | | | | | | | | | | | | | |
| yr4 | 2006 | 44 | 44 | | | | | 1 | | | | 6 8 19 | | | | 8 2 | | | | | | | | | | | 2.93 | 2.89 | 0.03 | | | | |
| yr5 | 2007 | 40 | 40 | | | | | | | | | 2 2 7 | | | | 12 10 6 1 | | | | | | | | | | | 3.30 | | | | | | |
| yr3 | 2004 | | | | | | | | | | | | | | | | | | | | | | | | | | | | | | | | |
| yr4 | 2005 | | | | | | | | | | | | | | | | | | | | | | | | | | | | | | | | |
| yr5 | 2006 | 49 | 48 | | | | | 1 1 1 6 | | | | 13 9 9 3 | | | | 3 2 | | | | | | | | | | | 3.47 | 3.38 | 0.09 | | | | |
| yr6 | 2007 | 46 | 46 | | | | | | | | | 1 | | | | 3 10 10 8 | | | | 10 2 2 | | | | | | | 3.88 | | | | | | |
| yr4 | 2004 | | | | | | | | | | | | | | | | | | | | | | | | | | | | | | | | |
| yr5 | 2005 | | | | | | | | | | | | | | | | | | | | | | | | | | | | | | | | |
| yr6 | 2006 | 46 | 46 | | | | | 1 | | | | 1 6 8 14 | | | | 13 1 1 1 | | | | | | | | | | | 3.96 | 3.88 | 0.08 | | | | |
| yr5 | 2004 | | | | | | | | | | | | | | | | | | | | | | | | | | | | | | | | |
| yr6 | 2005 | | | | | | | | | | | | | | | | | | | | | | | | | | | | | | | | |
| yr6 | 2004 | | | | | | | | | | | | | | | | | | | | | | | | | | | | | | | | |

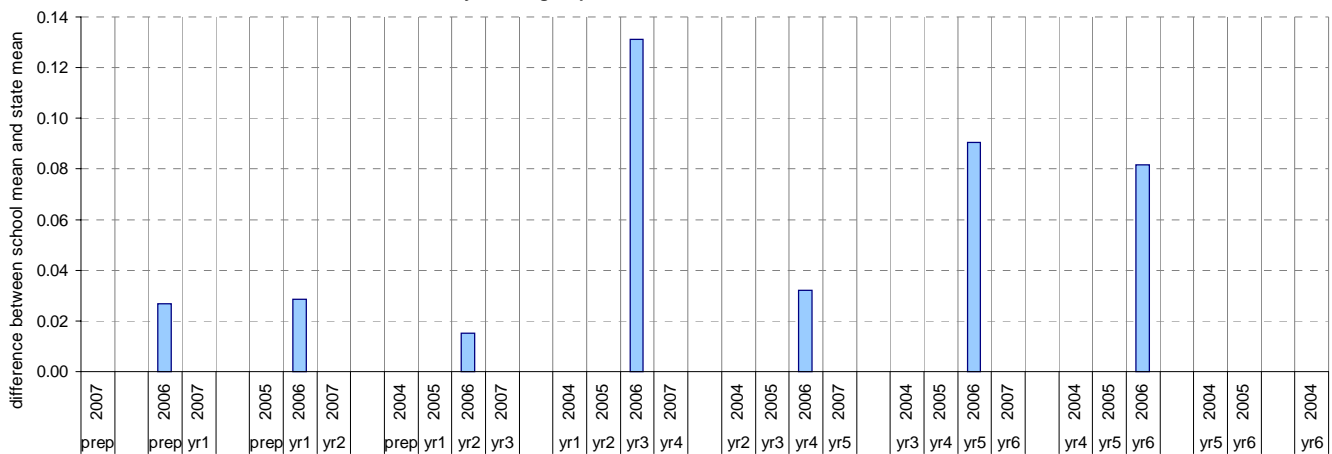
shading indicates a 'C' grade (at the expected standard) on the VELS scale.

¹ Students in group

² Total assessed

* Note: In 2006, approx. 850 schools assessed their students against the 0.25 VELS scale. 2006 benchmarks are therefore based on a subset of schools. 2007 benchmarks will be calculated in August, when data from all schools has been submitted.

Difference between school mean and state mean*, by cohort group



Teacher Judgments against the VELS - English (primary)

School no: 4877
School name: Keilor Heights Primary School
Source of data: Data retrieved electronically from CASES21.
Explanation: Teacher judgments of student progress against the VELS.

Speaking and Listening

| Year Level | Year | Total ¹ | Assessed ² | Level 1 | | | | Level 2 | | | | Level 3 | | | | Level 4 | | | | Level 5 | | | | Level 6 | | | | Level 6E | School mean | State mean* | Difference between school and state mean* |
|------------|------|--------------------|-----------------------|---------|------|------|------|----------|------|------|------|----------|------|------|------|-----------|------|------|------|---------|------|------|------|---------|------|------|-------|----------|-------------|-------------|---|
| | | | | 0.00 | 0.50 | 1.00 | 1.25 | 1.50 | 1.75 | 2.00 | 2.25 | 2.50 | 2.75 | 3.00 | 3.25 | 3.50 | 3.75 | 4.00 | 4.25 | 4.50 | 4.75 | 5.00 | 5.25 | 5.50 | 5.75 | 6.00 | 6.25 | | | | |
| prep | 2007 | 44 | 44 | 1 43 | | | | | | | | | | | | | | | | | | | | | 0.99 | | | | | | |
| prep | 2006 | 39 | 39 | 1 6 26 | | | | 6 | | | | | | | | | | | | | | | | | 0.94 | 0.97 | -0.03 | | | | |
| yr1 | 2007 | 38 | 38 | 1 | | | | 8 24 4 1 | | | | | | | | | | | | | | | | | 1.47 | | | | | | |
| prep | 2005 | | | | | | | | | | | | | | | | | | | | | | | | | | | | | | |
| yr1 | 2006 | 38 | 38 | 1 | | | | 3 32 2 | | | | | | | | | | | | | | | | | 1.48 | 1.48 | 0.00 | | | | |
| yr2 | 2007 | 40 | 40 | | | | | 2 3 31 | | | | 4 | | | | | | | | | | | | | 1.98 | | | | | | |
| prep | 2004 | | | | | | | | | | | | | | | | | | | | | | | | | | | | | | |
| yr1 | 2005 | | | | | | | | | | | | | | | | | | | | | | | | | | | | | | |
| yr2 | 2006 | 40 | 40 | | | | | 2 4 31 | | | | 3 | | | | | | | | | | | | | 1.97 | 1.98 | -0.01 | | | | |
| yr3 | 2007 | 43 | 43 | | | | | 2 | | | | 6 30 4 1 | | | | | | | | | | | | | 2.48 | | | | | | |
| yr1 | 2004 | | | | | | | | | | | | | | | | | | | | | | | | | | | | | | |
| yr2 | 2005 | | | | | | | | | | | | | | | | | | | | | | | | | | | | | | |
| yr3 | 2006 | 45 | 45 | | | | | | | | | 9 34 2 | | | | | | | | | | | | | 2.46 | 2.45 | 0.01 | | | | |
| yr4 | 2007 | 42 | 42 | | | | | | | | | 4 35 | | | | 3 | | | | | | | | | 2.99 | | | | | | |
| yr2 | 2004 | | | | | | | | | | | | | | | | | | | | | | | | | | | | | | |
| yr3 | 2005 | | | | | | | | | | | | | | | | | | | | | | | | | | | | | | |
| yr4 | 2006 | 44 | 44 | | | | | 1 | | | | 2 11 25 | | | | 5 | | | | | | | | | 2.92 | 2.94 | -0.02 | | | | |
| yr5 | 2007 | 40 | 40 | | | | | | | | | 1 4 | | | | 15 15 5 | | | | | | | | | 3.37 | | | | | | |
| yr3 | 2004 | | | | | | | | | | | | | | | | | | | | | | | | | | | | | | |
| yr4 | 2005 | | | | | | | | | | | | | | | | | | | | | | | | | | | | | | |
| yr5 | 2006 | 49 | 48 | | | | | | | | | 2 1 7 | | | | 11 21 3 1 | | | | 1 1 | | | | | 3.36 | 3.43 | -0.06 | | | | |
| yr6 | 2007 | 46 | 46 | | | | | | | | | 1 | | | | 1 8 13 15 | | | | 2 6 | | | | | 3.88 | | | | | | |
| yr4 | 2004 | | | | | | | | | | | | | | | | | | | | | | | | | | | | | | |
| yr5 | 2005 | | | | | | | | | | | | | | | | | | | | | | | | | | | | | | |
| yr6 | 2006 | 46 | 46 | | | | | 1 | | | | 1 | | | | 3 12 18 | | | | 7 4 | | | | | 3.91 | 3.93 | -0.02 | | | | |
| yr5 | 2004 | | | | | | | | | | | | | | | | | | | | | | | | | | | | | | |
| yr6 | 2005 | | | | | | | | | | | | | | | | | | | | | | | | | | | | | | |
| yr6 | 2004 | | | | | | | | | | | | | | | | | | | | | | | | | | | | | | |

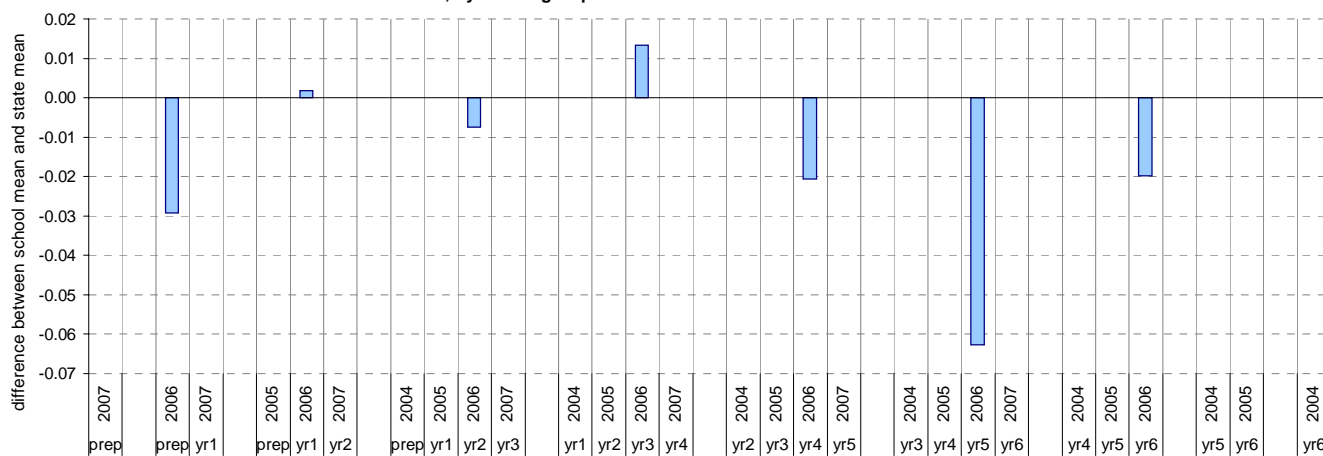
shading indicates a 'C' grade (at the expected standard) on the VELS scale.

¹ Students in group

² Total assessed

* Note: In 2006, approx. 850 schools assessed their students against the 0.25 VELS scale. 2006 benchmarks are therefore based on a subset of schools. 2007 benchmarks will be calculated in August, when data from all schools has been submitted.

Difference between school mean and state mean*, by cohort group



Teacher Judgments against the VELS - Mathematics (primary)

School no: 4877
School name: Keilor Heights Primary School
Source of data: Data retrieved electronically from CASES21.
Explanation: Teacher judgments of student progress against the VELS.

Number

| Year Level | Year | Total ¹ | Assessed ² | Level 1 | | | | Level 2 | | | | Level 3 | | | | Level 4 | | | | Level 5 | | | | Level 6 | | | | Level 6E | | | School mean | State mean* | Difference between school and state mean* |
|------------|------|--------------------|-----------------------|---------|------|------|------|-----------|------|------|------|-----------|------|------|------|------------|------|------|------|---------|------|------|------|---------|------|------|------|----------|-------|--|-------------|-------------|---|
| | | | | 0.00 | 0.50 | 1.00 | 1.25 | 1.50 | 1.75 | 2.00 | 2.25 | 2.50 | 2.75 | 3.00 | 3.25 | 3.50 | 3.75 | 4.00 | 4.25 | 4.50 | 4.75 | 5.00 | 5.25 | 5.50 | 5.75 | 6.00 | 6.25 | 6.50 | 6.75 | | | | |
| prep | 2007 | 44 | 44 | 42 | | | | 2 | | | | | | | | | | | | | | | | | | | 1.01 | | | | | | |
| prep | 2006 | 39 | 39 | 1 33 | | | | 5 | | | | | | | | | | | | | | | | | | | 1.02 | 1.00 | 0.02 | | | | |
| yr1 | 2007 | 38 | 38 | 1 | | | | 3 22 11 1 | | | | | | | | | | | | | | | | | | | 1.55 | | | | | | |
| prep | 2005 | | | | | | | | | | | | | | | | | | | | | | | | | | | | | | | | |
| yr1 | 2006 | 38 | 38 | | | | | 7 21 8 2 | | | | | | | | | | | | | | | | | | | 1.53 | 1.51 | 0.02 | | | | |
| yr2 | 2007 | 40 | 40 | | | | | 1 1 6 14 | | | | 17 1 | | | | | | | | | | | | | | | 2.05 | | | | | | |
| prep | 2004 | | | | | | | | | | | | | | | | | | | | | | | | | | | | | | | | |
| yr1 | 2005 | | | | | | | | | | | | | | | | | | | | | | | | | | | | | | | | |
| yr2 | 2006 | 40 | 40 | | | | | 1 4 1 28 | | | | 5 1 | | | | | | | | | | | | | | | 1.97 | 1.99 | -0.02 | | | | |
| yr3 | 2007 | 43 | 43 | | | | | 3 2 | | | | 5 23 7 3 | | | | | | | | | | | | | | | 2.47 | | | | | | |
| yr1 | 2004 | | | | | | | | | | | | | | | | | | | | | | | | | | | | | | | | |
| yr2 | 2005 | | | | | | | | | | | | | | | | | | | | | | | | | | | | | | | | |
| yr3 | 2006 | 45 | 45 | | | | | | | | | 12 26 5 2 | | | | | | | | | | | | | | | 2.48 | 2.46 | 0.02 | | | | |
| yr4 | 2007 | 42 | 42 | | | | | | | | | 1 6 18 | | | | 17 | | | | | | | | | | | 3.05 | | | | | | |
| yr2 | 2004 | | | | | | | | | | | | | | | | | | | | | | | | | | | | | | | | |
| yr3 | 2005 | | | | | | | | | | | | | | | | | | | | | | | | | | | | | | | | |
| yr4 | 2006 | 44 | 44 | | | | | 1 | | | | 2 10 21 | | | | 10 | | | | | | | | | | | 2.95 | 2.95 | 0.01 | | | | |
| yr5 | 2007 | 40 | 40 | | | | | | | | | 2 5 | | | | 12 13 7 1 | | | | | | | | | | | 3.37 | | | | | | |
| yr3 | 2004 | | | | | | | | | | | | | | | | | | | | | | | | | | | | | | | | |
| yr4 | 2005 | | | | | | | | | | | | | | | | | | | | | | | | | | | | | | | | |
| yr5 | 2006 | 49 | 48 | | | | | | | | | 1 6 | | | | 13 15 10 3 | | | | | | | | | | | 3.44 | 3.43 | 0.01 | | | | |
| yr6 | 2007 | 46 | 46 | | | | | | | | | | | | | 3 6 10 15 | | | | 9 3 | | | | | | | 3.91 | | | | | | |
| yr4 | 2004 | | | | | | | | | | | | | | | | | | | | | | | | | | | | | | | | |
| yr5 | 2005 | | | | | | | | | | | | | | | | | | | | | | | | | | | | | | | | |
| yr6 | 2006 | 46 | 46 | | | | | | | | | 1 | | | | 10 14 9 | | | | 8 4 | | | | | | | 3.88 | 3.93 | -0.06 | | | | |
| yr5 | 2004 | | | | | | | | | | | | | | | | | | | | | | | | | | | | | | | | |
| yr6 | 2005 | | | | | | | | | | | | | | | | | | | | | | | | | | | | | | | | |
| yr6 | 2004 | | | | | | | | | | | | | | | | | | | | | | | | | | | | | | | | |

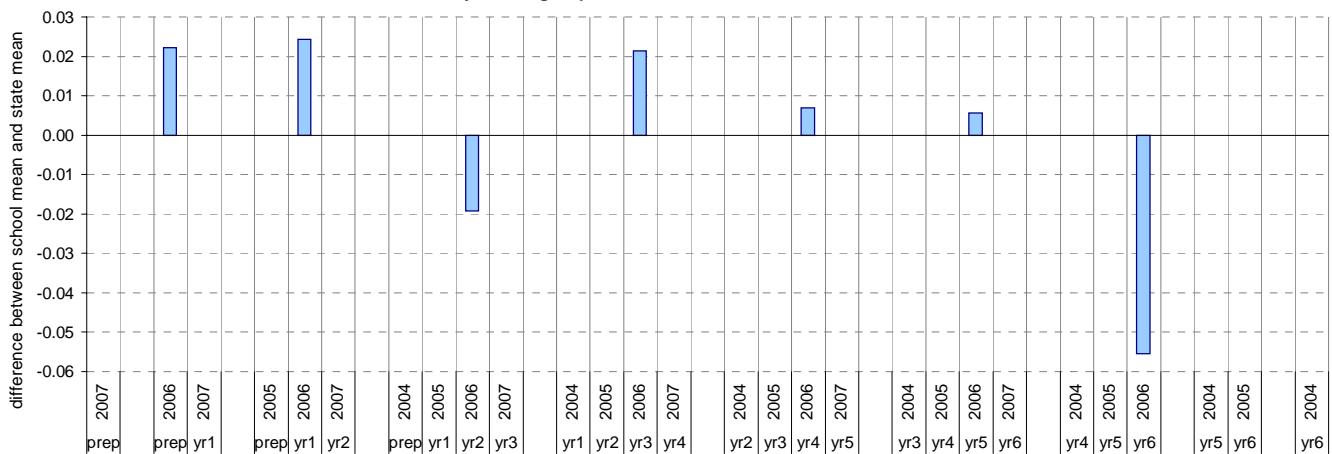
shading indicates a 'C' grade (at the expected standard) on the VELS scale.

¹ Students in group

² Total assessed

* Note: In 2006, approx. 850 schools assessed their students against the 0.25 VELS scale. 2006 benchmarks are therefore based on a subset of schools. 2007 benchmarks will be calculated in August, when data from all schools has been submitted.

Difference between school mean and state mean*, by cohort group



Teacher Judgments against the VELS - Mathematics (primary)

School no: 4877
School name: Keilor Heights Primary School
Source of data: Data retrieved electronically from CASES21.
Explanation: Teacher judgments of student progress against the VELS.

Measurement, Chance and Data

| Year Level | Year | Total ¹ | Assessed ² | Level 1 | | | Level 2 | | | Level 3 | | | Level 4 | | | Level 5 | | | Level 6 | | | Level 6E | | | School mean | State mean* | Difference between school and state mean* | | | | | | | | | | |
|------------|------|--------------------|-----------------------|---------|------|------|----------------|------|------|---------|------|------|---------|------|------|---------|------|------|---------|------|------|----------|------|------|-------------|-------------|---|------|-------|------|------|------|------|------|------|-------|-------|
| | | | | 0.00 | 0.50 | 1.00 | 1.25 | 1.50 | 1.75 | 2.00 | 2.25 | 2.50 | 2.75 | 3.00 | 3.25 | 3.50 | 3.75 | 4.00 | 4.25 | 4.50 | 4.75 | 5.00 | 5.25 | 5.50 | | | | 5.75 | 6.00 | 6.25 | 6.50 | 6.75 | | | | | |
| prep | 2007 | 44 | 44 | 44 | | | | | | | | | | | | | | | | | | | | | | | 1.00 | | | | | | | | | | |
| prep | 2006 | 39 | 39 | 3 36 | | | | | | | | | | | | | | | | | | | | | | | 0.96 | 0.97 | -0.01 | | | | | | | | |
| yr1 | 2007 | 38 | 38 | 1 | | | 2 28 7 | | | | | | | | | | | | | | | | | | | | | | 1.52 | | | | | | | | |
| prep | 2005 | | | | | | | | | | | | | | | | | | | | | | | | | | | | | | | | | | | | |
| yr1 | 2006 | 38 | 38 | | | | 4 30 3 1 | | | | | | | | | | | | | | | | | | | | | | | 1.51 | 1.48 | 0.02 | | | | | |
| yr2 | 2007 | 40 | 40 | | | | 1 4 28 7 | | | | | | | | | | | | | | | | | | | | | | | | 2.01 | | | | | | |
| prep | 2004 | | | | | | | | | | | | | | | | | | | | | | | | | | | | | | | | | | | | |
| yr1 | 2005 | | | | | | | | | | | | | | | | | | | | | | | | | | | | | | | | | | | | |
| yr2 | 2006 | 40 | 40 | | | | 4 32 3 1 | | | 3 1 | | | | | | | | | | | | | | | | | | | | 1.98 | 1.97 | 0.01 | | | | | |
| yr3 | 2007 | 43 | 43 | | | | 2 2 7 28 3 1 | | | | | | | | | | | | | | | | | | | | | | | | | 2.43 | | | | | |
| yr1 | 2004 | | | | | | | | | | | | | | | | | | | | | | | | | | | | | | | | | | | | |
| yr2 | 2005 | | | | | | | | | | | | | | | | | | | | | | | | | | | | | | | | | | | | |
| yr3 | 2006 | 45 | 45 | | | | 3 41 1 | | | | | | | | | | | | | | | | | | | | | | | | | 2.49 | 2.45 | 0.04 | | | |
| yr4 | 2007 | 42 | 42 | | | | 3 32 7 | | | | | | | | | | | | | | | | | | | | | | | | | | 3.02 | | | | |
| yr2 | 2004 | | | | | | | | | | | | | | | | | | | | | | | | | | | | | | | | | | | | |
| yr3 | 2005 | | | | | | | | | | | | | | | | | | | | | | | | | | | | | | | | | | | | |
| yr4 | 2006 | 44 | 44 | | | | 1 1 4 33 5 | | | | | | | | | | | | | | | | | | | | | | | | | | 2.97 | 2.94 | 0.03 | | |
| yr5 | 2007 | 40 | 40 | | | | 2 4 13 14 6 1 | | | | | | | | | | | | | | | | | | | | | | | | | | | 3.38 | | | |
| yr3 | 2004 | | | | | | | | | | | | | | | | | | | | | | | | | | | | | | | | | | | | |
| yr4 | 2005 | | | | | | | | | | | | | | | | | | | | | | | | | | | | | | | | | | | | |
| yr5 | 2006 | 49 | 48 | | | | 1 4 17 17 9 | | | | | | | | | | | | | | | | | | | | | | | | | | | 3.40 | 3.42 | -0.02 | |
| yr6 | 2007 | 46 | 46 | | | | 1 3 12 16 11 3 | | | | | | | | | | | | | | | | | | | | | | | | | | | 3.97 | | | |
| yr4 | 2004 | | | | | | | | | | | | | | | | | | | | | | | | | | | | | | | | | | | | |
| yr5 | 2005 | | | | | | | | | | | | | | | | | | | | | | | | | | | | | | | | | | | | |
| yr6 | 2006 | 46 | 46 | | | | 1 9 20 10 3 3 | | | | | | | | | | | | | | | | | | | | | | | | | | | | 3.82 | 3.92 | -0.10 |
| yr5 | 2004 | | | | | | | | | | | | | | | | | | | | | | | | | | | | | | | | | | | | |
| yr6 | 2005 | | | | | | | | | | | | | | | | | | | | | | | | | | | | | | | | | | | | |
| yr6 | 2004 | | | | | | | | | | | | | | | | | | | | | | | | | | | | | | | | | | | | |

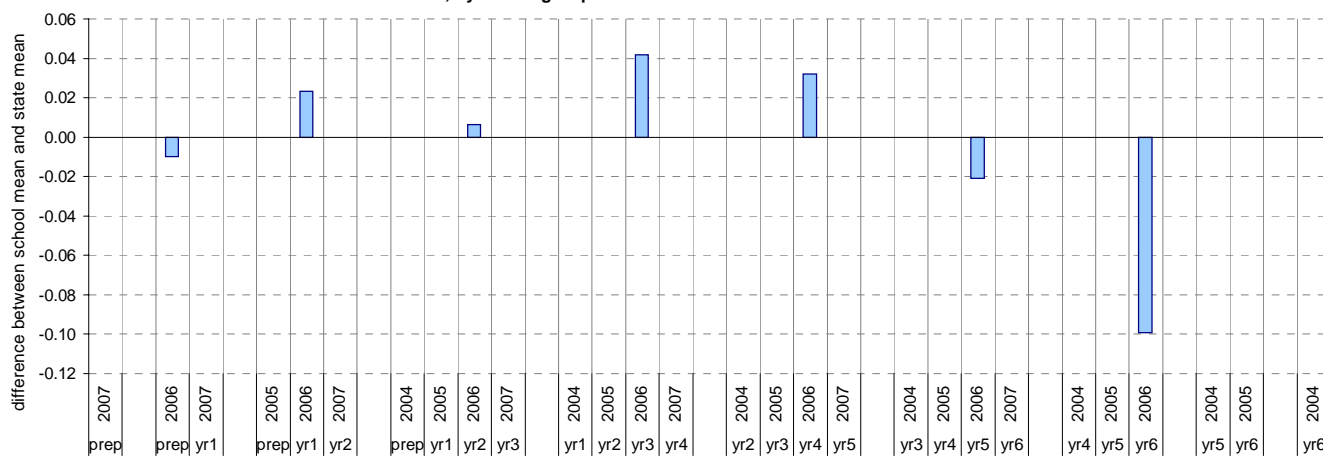
shading indicates a 'C' grade (at the expected standard) on the VELS scale.

¹ Students in group

² Total assessed

* Note: In 2006, approx. 850 schools assessed their students against the 0.25 VELS scale. 2006 benchmarks are therefore based on a subset of schools. 2007 benchmarks will be calculated in August, when data from all schools has been submitted.

Difference between school mean and state mean*, by cohort group



AIM Year 3 and 5: Reading

School no: 4877

School name: Keilor Heights Primary School

Source of data: Victorian Curriculum and Assessment Authority.

Explanation: The Achievement Improvement Monitor (AIM) is a statewide assessment program conducted each year for students in Years 3, 5, 7 and 9. For more detailed AIM data, refer to the AIM Data Service website at <http://aimds.vcaa.vic.edu.au>.

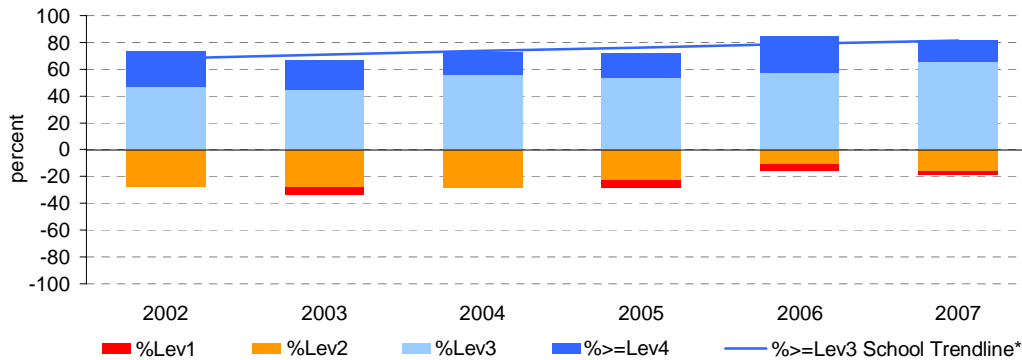
Notes: * The school trendline is being trialled. It is only plotted when there is data for each calendar year.

** % student participation = (students who participated in AIM / Feb enrolments) * 100

Year 3

| | student participation | | % of students by VELs level | | | | | | | Mean CSF / VELs Score | |
|------|-----------------------|-------|-----------------------------|------|------|------|------|------|-------|-----------------------|-------|
| | (n) | (%)** | Lev1 | Lev2 | Lev3 | Lev4 | Lev5 | Lev6 | Lev6E | School | State |
| 2002 | 41 | 98 | 0 | 27 | 46 | 27 | 0 | 0 | 0 | 2.5 | 2.4 |
| 2003 | 36 | 92 | 6 | 28 | 44 | 22 | 0 | 0 | 0 | 2.3 | 2.3 |
| 2004 | 43 | 100 | 0 | 28 | 56 | 16 | 0 | 0 | 0 | 2.5 | 2.3 |
| 2005 | 39 | 81 | 5 | 23 | 54 | 18 | 0 | 0 | 0 | 2.3 | 2.4 |
| 2006 | 44 | 94 | 5 | 11 | 57 | 27 | 0 | 0 | 0 | 2.5 | 2.3 |
| 2007 | 38 | 95 | 3 | 16 | 66 | 16 | 0 | 0 | 0 | 2.4 | 2.3 |

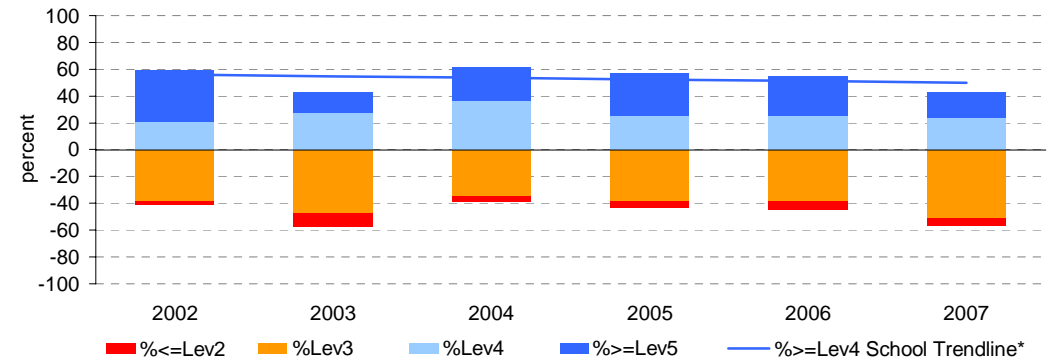
Proportion of students by VELs level



Year 5

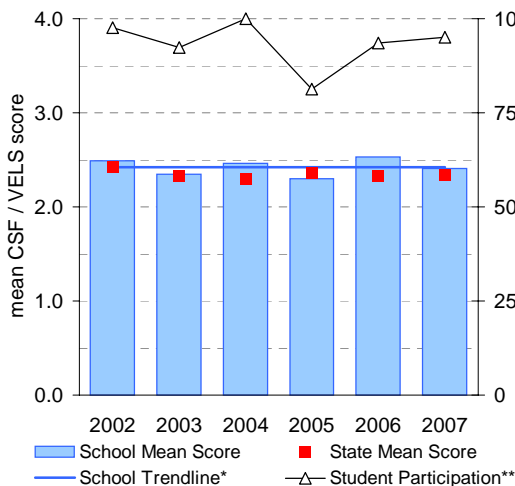
| | student participation | | % of students by VELs level | | | | | | | Mean CSF / VELs Score | |
|------|-----------------------|-------|-----------------------------|------|------|------|------|------|-------|-----------------------|-------|
| | (n) | (%)** | Lev1 | Lev2 | Lev3 | Lev4 | Lev5 | Lev6 | Lev6E | School | State |
| 2002 | 34 | 92 | 0 | 3 | 38 | 21 | 38 | 0 | 0 | 3.4 | 3.1 |
| 2003 | 40 | 93 | 0 | 10 | 48 | 28 | 15 | 0 | 0 | 2.9 | 3.2 |
| 2004 | 49 | 98 | 0 | 4 | 35 | 37 | 24 | 0 | 0 | 3.2 | 3.2 |
| 2005 | 44 | 94 | 0 | 5 | 39 | 25 | 32 | 0 | 0 | 3.3 | 3.2 |
| 2006 | 47 | 92 | 0 | 6 | 38 | 26 | 30 | 0 | 0 | 3.2 | 3.1 |
| 2007 | 37 | 84 | 0 | 5 | 51 | 24 | 19 | 0 | 0 | 3.1 | 3.2 |

Proportion of students by VELs level

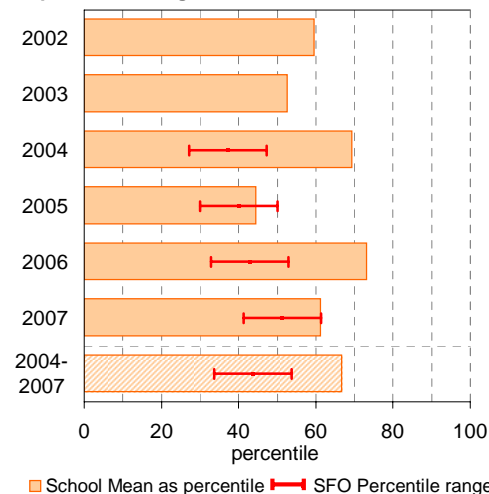


Year 3

School Mean against State Mean, including Participation

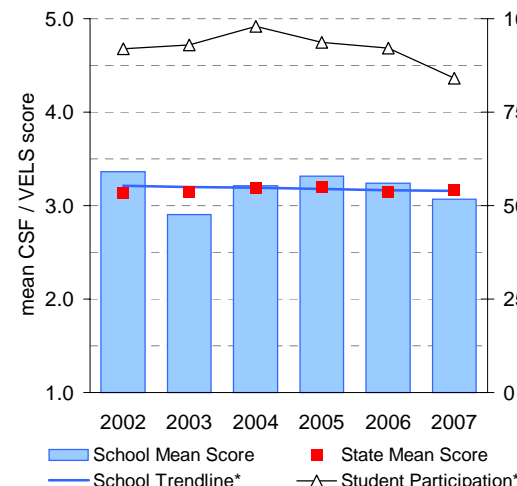


School Mean as percentile against SFO percentile range

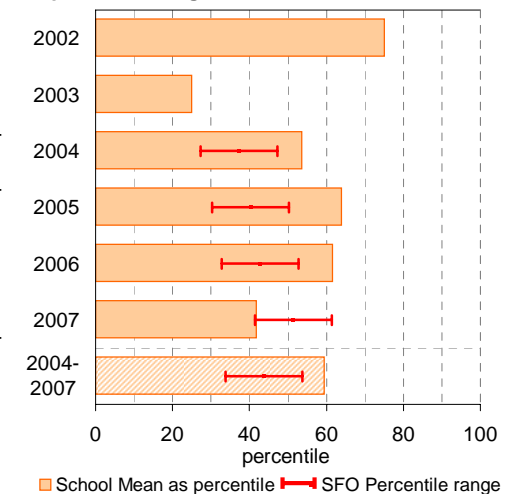


Year 5

School Mean against State Mean, including Participation



School Mean as percentile against SFO percentile range



AIM Year 3 and 5: Number

School no: 4877

School name: Keilor Heights Primary School

Source of data: Victorian Curriculum and Assessment Authority.

Explanation: The Achievement Improvement Monitor (AIM) is a statewide assessment program conducted each year for students in Years 3, 5, 7 and 9. For more detailed AIM data, refer to the AIM Data Service website at <http://aimds.vcaa.vic.edu.au>.

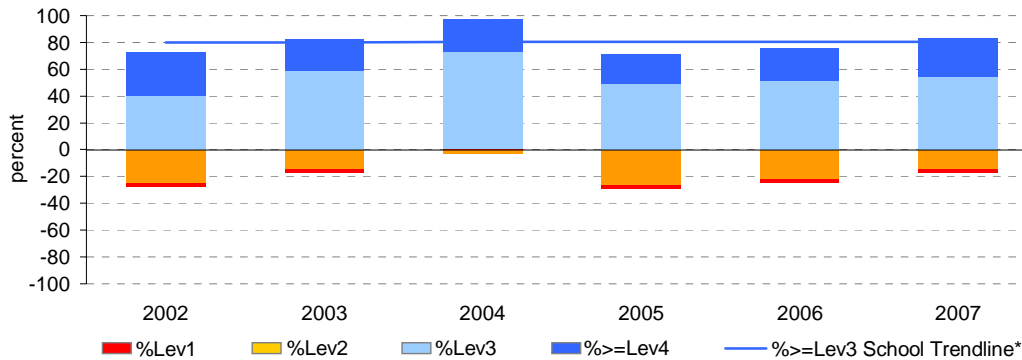
Notes: * The school trendline is being trialled. It is only plotted when there is data for each calendar year.

** % student participation = (students who participated in AIM / Feb enrolments) * 100

Year 3

| | student participation | | % of students by VELs level | | | | | | | Mean CSF / VELs Score | |
|------|-----------------------|-------|-----------------------------|------|------|------|------|------|-------|-----------------------|-------|
| | (n) | (%)** | Lev1 | Lev2 | Lev3 | Lev4 | Lev5 | Lev6 | Lev6E | School | State |
| 2002 | 40 | 95 | 3 | 25 | 40 | 33 | 0 | 0 | 0 | 2.6 | 2.4 |
| 2003 | 34 | 87 | 3 | 15 | 59 | 24 | 0 | 0 | 0 | 2.5 | 2.4 |
| 2004 | 41 | 95 | 0 | 2 | 73 | 24 | 0 | 0 | 0 | 2.7 | 2.4 |
| 2005 | 41 | 85 | 2 | 27 | 49 | 22 | 0 | 0 | 0 | 2.3 | 2.4 |
| 2006 | 45 | 96 | 2 | 22 | 51 | 24 | 0 | 0 | 0 | 2.4 | 2.4 |
| 2007 | 35 | 88 | 3 | 14 | 54 | 29 | 0 | 0 | 0 | 2.5 | 2.4 |

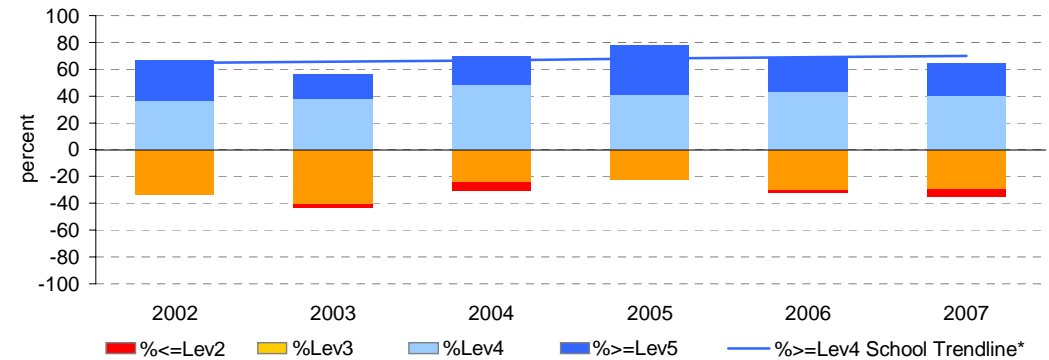
Proportion of students by VELs level



Year 5

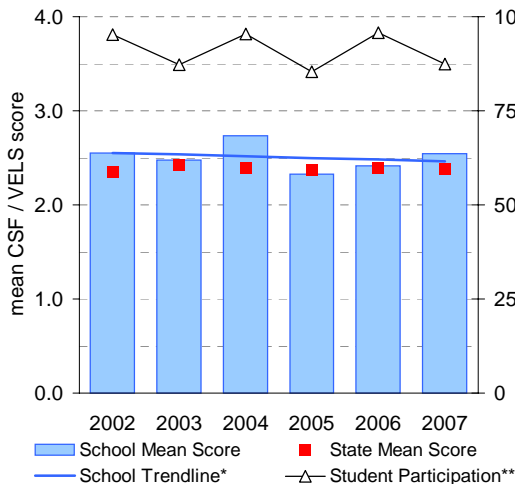
| | student participation | | % of students by VELs level | | | | | | | Mean CSF / VELs Score | |
|------|-----------------------|-------|-----------------------------|------|------|------|------|------|-------|-----------------------|-------|
| | (n) | (%)** | Lev1 | Lev2 | Lev3 | Lev4 | Lev5 | Lev6 | Lev6E | School | State |
| 2002 | 36 | 97 | 0 | 0 | 33 | 36 | 31 | 0 | 0 | 3.5 | 3.3 |
| 2003 | 39 | 91 | 0 | 3 | 41 | 38 | 18 | 0 | 0 | 3.2 | 3.1 |
| 2004 | 46 | 92 | 0 | 7 | 24 | 48 | 22 | 0 | 0 | 3.4 | 3.2 |
| 2005 | 46 | 98 | 0 | 0 | 22 | 41 | 37 | 0 | 0 | 3.6 | 3.2 |
| 2006 | 47 | 92 | 0 | 2 | 30 | 43 | 26 | 0 | 0 | 3.6 | 3.2 |
| 2007 | 37 | 84 | 0 | 5 | 30 | 41 | 24 | 0 | 0 | 3.4 | 3.2 |

Proportion of students by VELs level

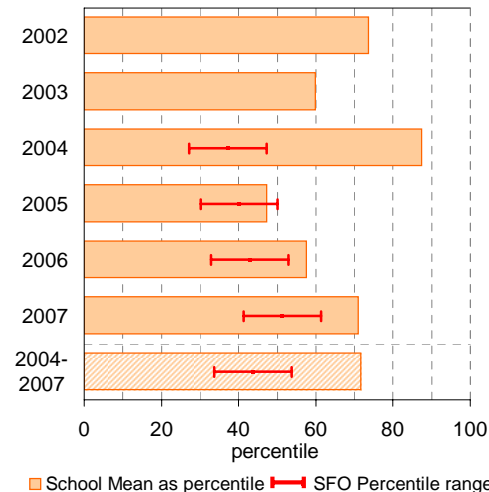


Year 3

School Mean against State Mean, including Participation

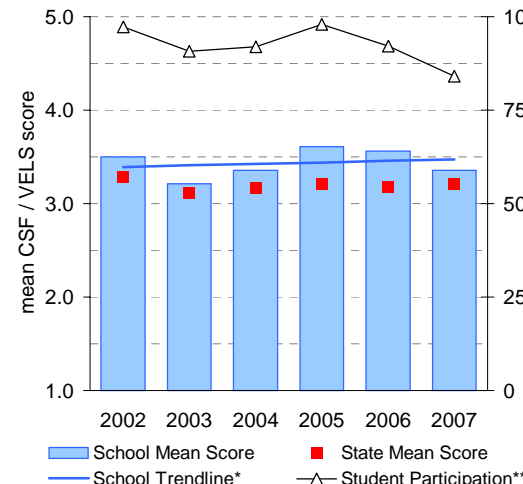


School Mean as percentile against SFO percentile range

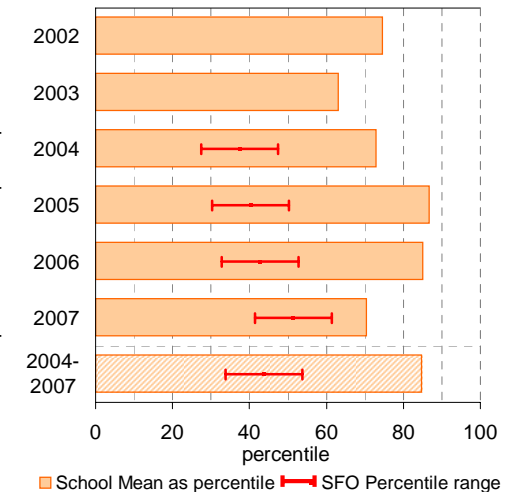


Year 5

School Mean against State Mean, including Participation



School Mean as percentile against SFO percentile range



Teacher Assessment of Student Progress (PSD students)

School no: 4877

School name: Keilor Heights Primary School

Explanation: Teachers assess their students' progress against the 8 VELs Domains / CSF KLAs using a 6-point scale (students in special schools and those who cannot be assessed against the VELs / CSF).

Source of data: Data transmitted from school to DEECD via an online web-form.

| | No progress (%) | Little progress (%) | Satisfactory progress (%) | Good progress (%) | Very good progress (%) | Excellent progress (%) | Total students assessed ¹ (no.) |
|--|--------------------|---------------------------|---------------------------------|-------------------------|------------------------------|------------------------------|--|
| 2003 (by CSF KLA) | | | | | | | |
| English | | | | | | | |
| Mathematics | | | | | | | |
| Science | | | | | | | |
| Technology | | | | | | | |
| The Arts | | | | | | | |
| H&PE | | | | | | | |
| SOSE | | | | | | | |
| 2004 (by CSF KLA) | | | | | | | |
| English | | | | | | | |
| Mathematics | | | | | | | |
| Science | | | | | | | |
| Technology | | | | | | | |
| The Arts | | | | | | | |
| H&PE | | | | | | | |
| SOSE | | | | | | | |
| 2005 (by CSF KLA) | | | | | | | |
| English | | | | | | | |
| Mathematics | | | | | | | |
| Science | | | | | | | |
| Technology | | | | | | | |
| The Arts | | | | | | | |
| H&PE | | | | | | | |
| SOSE | | | | | | | |
| 2006 (by VELs Domain) | | | | | | | |
| English | | | | | | | |
| Mathematics | | | | | | | |
| Science | | | | | | | |
| Technology | | | | | | | |
| The Arts | | | | | | | |
| H&PE | | | | | | | |
| SOSE | | | | | | | |
| 2007 (by VELs Domain) | | | | | | | |
| English | | 7 | 33 | 60 | | | 15 |
| Mathematics | | 13 | 47 | 33 | 7 | | 15 |
| Science | | 27 | 40 | 27 | 7 | | 15 |
| ICT | | | 67 | 27 | 7 | | 15 |
| The Arts | | 7 | 53 | 27 | 13 | | 15 |
| H&PE | | 13 | 40 | 33 | 13 | | 15 |
| Civics & Citizenship | | 40 | 13 | 40 | | 7 | 15 |
| 2006 Primary state benchmarks (by VELs Domain)* | | | | | | | |
| English | 2 | 15 | 26 | 30 | 19 | 8 | |
| Mathematics | 2 | 17 | 30 | 29 | 14 | 6 | |
| Science | 2 | 14 | 33 | 33 | 12 | 6 | |
| Technology | 2 | 8 | 33 | 34 | 15 | 8 | |
| The Arts | 1 | 9 | 33 | 32 | 17 | 7 | |
| H&PE | 1 | 5 | 29 | 34 | 24 | 8 | |
| SOSE | 2 | 11 | 32 | 30 | 17 | 8 | |

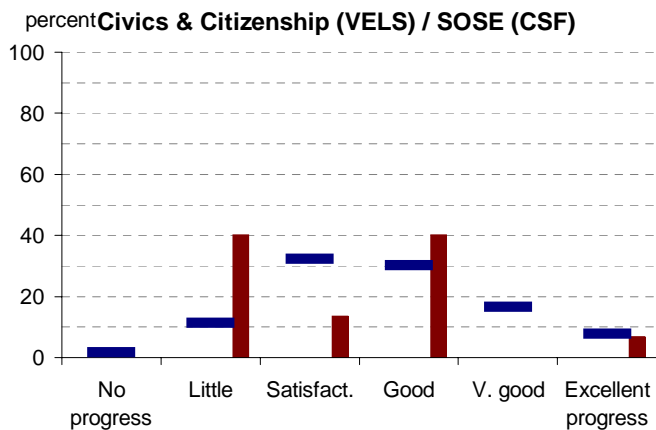
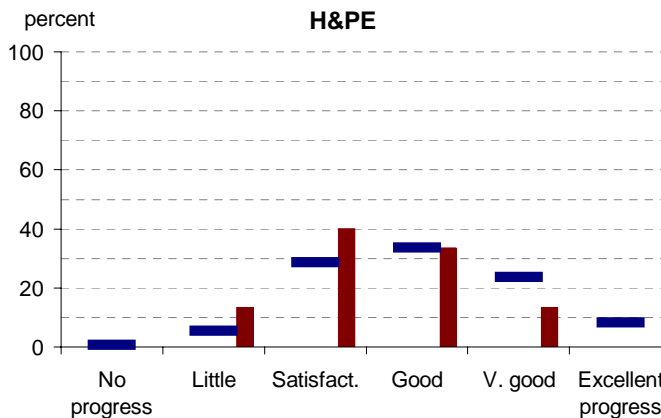
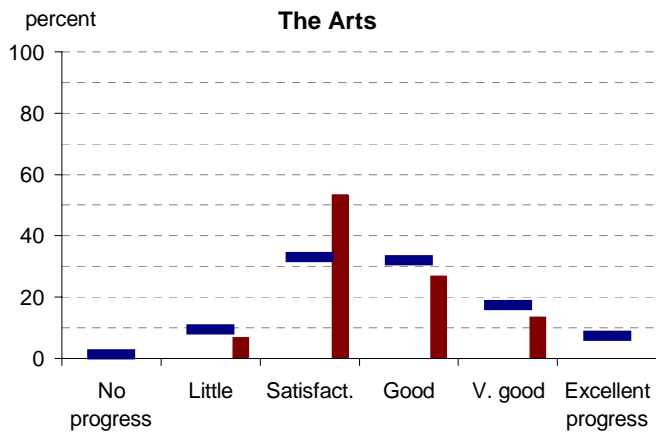
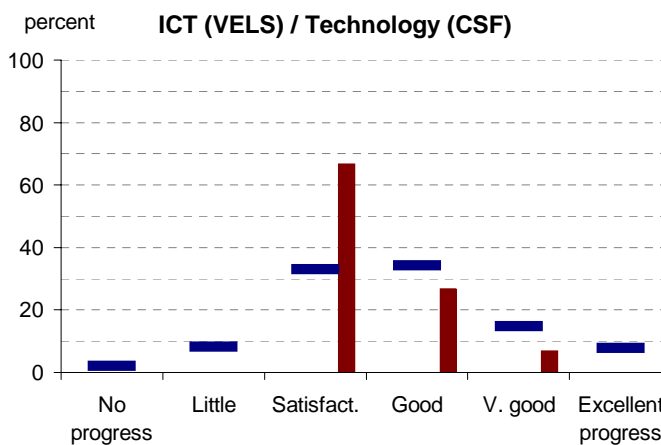
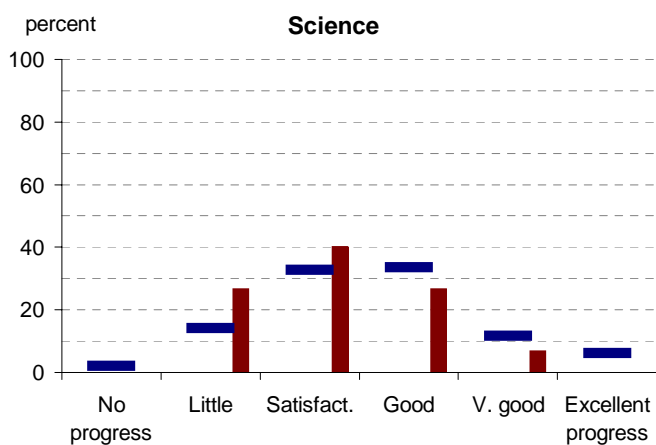
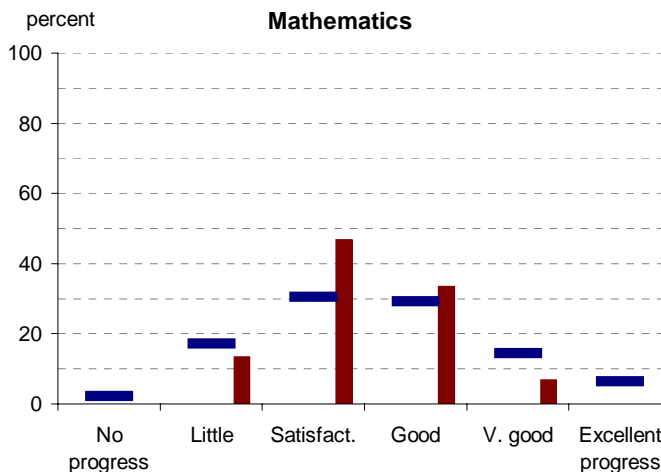
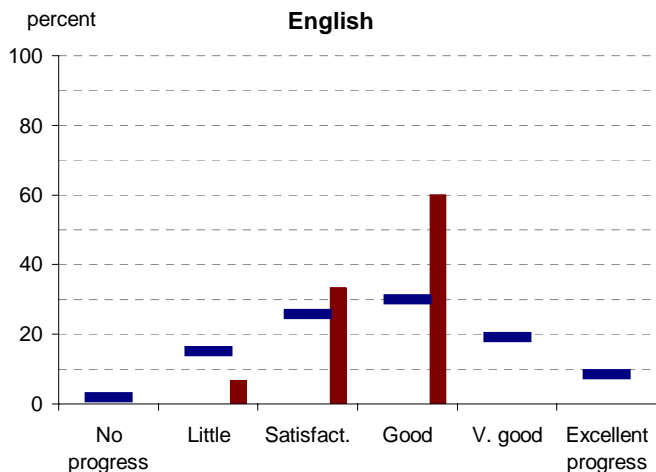
Notes: ¹ If schools provided percentages only, it is not possible to report the number of students assessed. In these cases, the total percentage (100) will be shown.

* 2007 benchmarks will be calculated in August, when data from all schools has been submitted.

Teacher Assessment of Student Progress (PSD students)

School no: 4877

School name: Keilor Heights Primary School



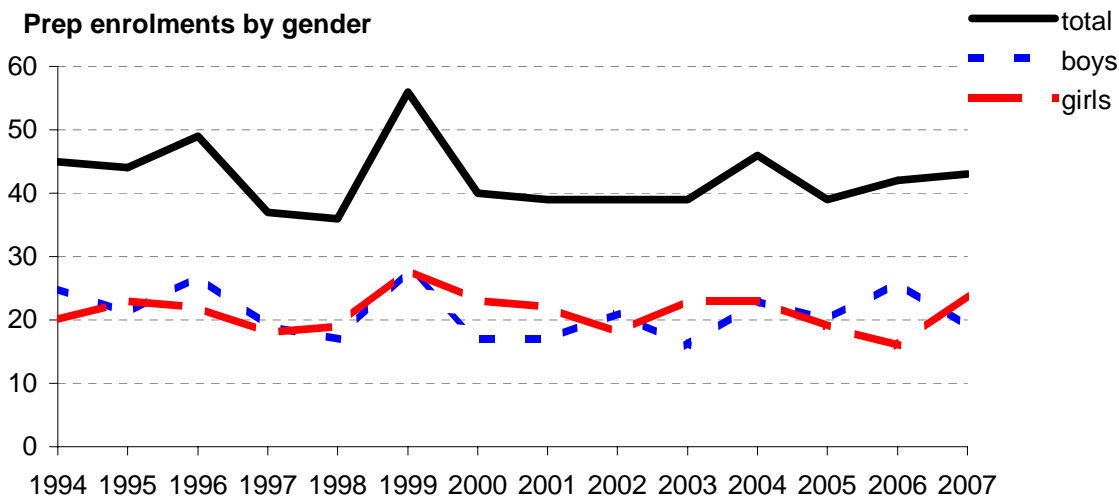
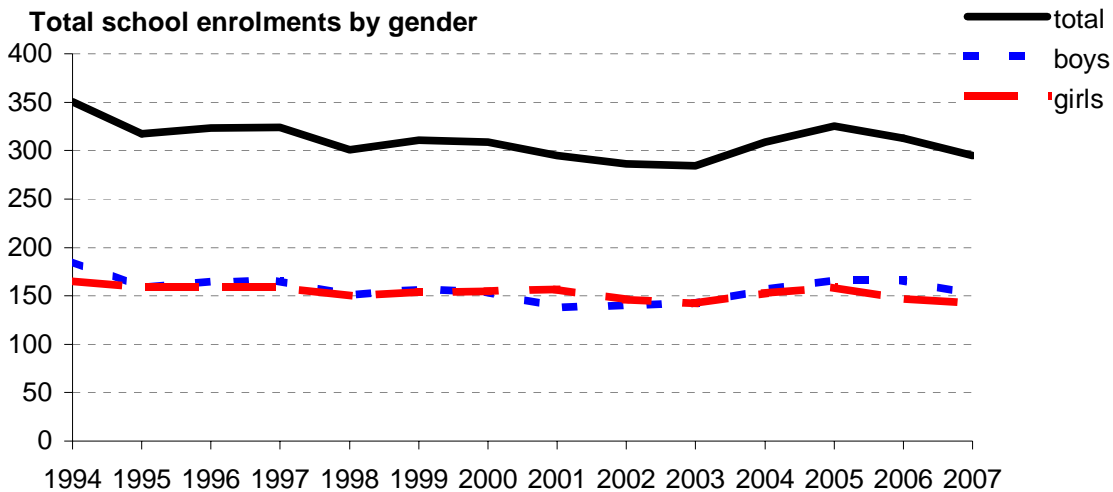
- 2003 (by CSF KLA)
- 2004 (by CSF KLA)
- 2005 (by CSF KLA)
- 2006 (by VELS Domain)
- 2007 (by VELS Domain)
- 2006 Primary state benchmarks (by VELS Domain)*

Notes: * 2007 benchmarks will be calculated in August, when data from all schools has been submitted.

Enrolments

School no: 4877
School name: Keilor Heights Primary School
Explanation: Enrolments at February census.
Source of data: February census.

| Year | Total school enrolment | | | Prep enrolment | | | Year 7 enrolments | | |
|------|------------------------|-------|-------|----------------|-------|-------|-------------------|-------|-------|
| | boys | girls | total | boys | girls | total | boys | girls | total |
| 1994 | 186 | 165 | 351 | 25 | 20 | 45 | | | |
| 1995 | 159 | 159 | 318 | 21 | 23 | 44 | | | |
| 1996 | 165 | 159 | 324 | 27 | 22 | 49 | | | |
| 1997 | 166 | 159 | 324 | 19 | 18 | 37 | | | |
| 1998 | 151 | 150 | 301 | 17 | 19 | 36 | | | |
| 1999 | 157 | 154 | 311 | 28 | 28 | 56 | | | |
| 2000 | 154 | 155 | 309 | 17 | 23 | 40 | | | |
| 2001 | 138 | 157 | 295 | 17 | 22 | 39 | | | |
| 2002 | 140 | 146 | 286 | 21 | 18 | 39 | | | |
| 2003 | 142 | 142 | 284 | 16 | 23 | 39 | | | |
| 2004 | 156 | 153 | 309 | 23 | 23 | 46 | | | |
| 2005 | 166 | 159 | 325 | 20 | 19 | 39 | | | |
| 2006 | 166 | 147 | 313 | 26 | 16 | 42 | | | |
| 2007 | 152 | 143 | 295 | 19 | 24 | 43 | | | |



Student Absence

School no: 4877

School name: Keilor Heights Primary School

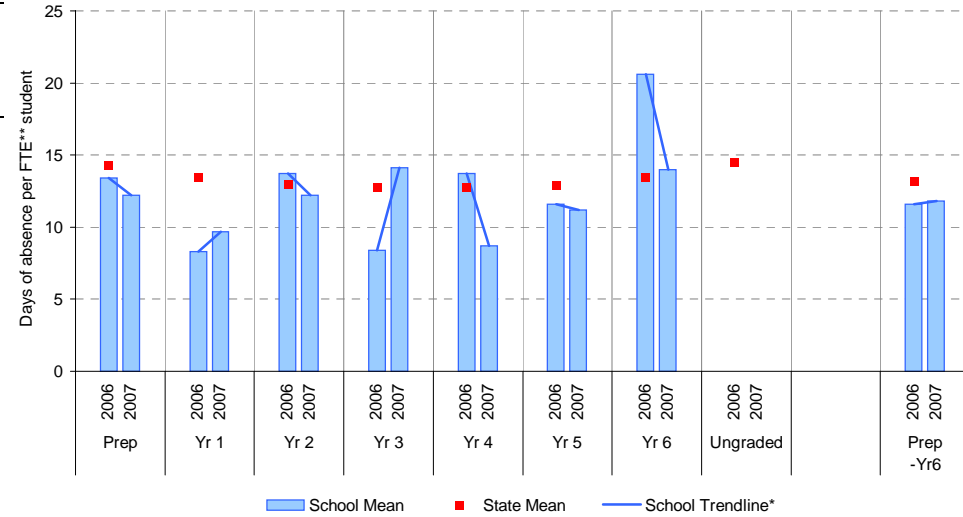
Source of data: Data retrieved electronically from CASES21.

Explanation: The average (mean) number of absent days† per student. Up to 2006, the formula used to calculate the average number of absent days per student was based on student headcount. From 2006, the formula was based on FTE** students. The new formula provides a more accurate summary of student absence. For 2006, student absence is provided for both student headcount and FTE student. Note that 20 absent days equates to 1 absent day per fortnight, and 10 absent days to 1 absent day per month.

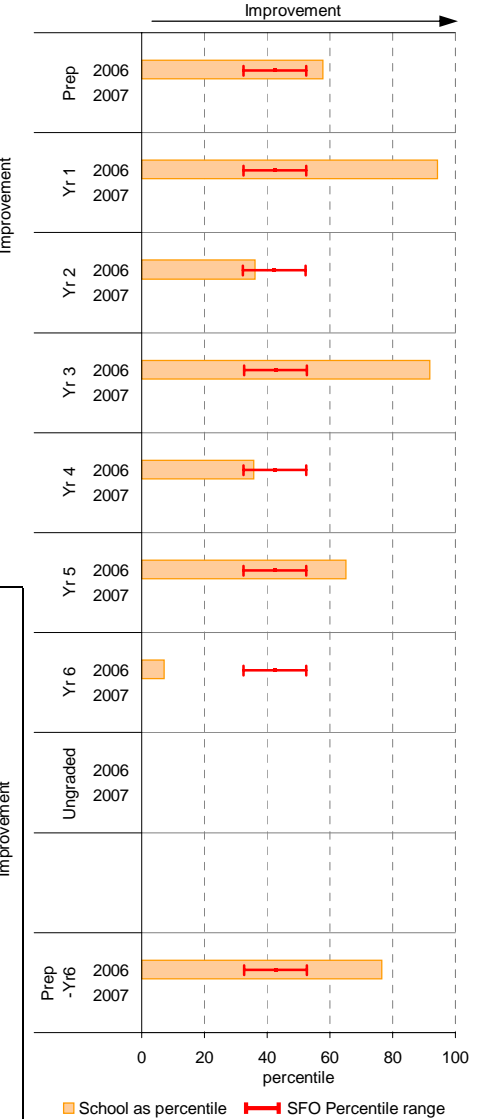
Student Absence (by FTE** student, 2006 and onward)

| | School | | | | 2006 state benchmark^ | | |
|----------|------------|---------------------------------|------------|---------------------------------|-----------------------|------|------------|
| | 2006 | | 2007 | | 25th ptile | Mean | 75th ptile |
| | Enrolments | Avg absent days / FTE** student | Enrolments | Avg absent days / FTE** student | | | |
| Prep | 40.5 | 13.4 | 43.5 | 12.2 | 11.6 | 14.3 | 17.1 |
| Yr 1 | 38.1 | 8.3 | 37.7 | 9.7 | 11.3 | 13.4 | 15.6 |
| Yr 2 | 41.2 | 13.7 | 40.4 | 12.2 | 10.7 | 13.0 | 15.1 |
| Yr 3 | 46.4 | 8.4 | 41.9 | 14.1 | 10.7 | 12.7 | 14.8 |
| Yr 4 | 47.0 | 13.7 | 43.2 | 8.7 | 10.6 | 12.7 | 14.7 |
| Yr 5 | 50.3 | 11.6 | 42.5 | 11.2 | 10.8 | 12.9 | 15.2 |
| Yr 6 | 1.1 | 20.6 | 46.5 | 14 | 11.0 | 13.4 | 15.8 |
| Ungraded | | | | | | 14.5 | |
| P-6 mean | | 11.6 | | 11.8 | | 13.2 | |

School Mean against State Mean^



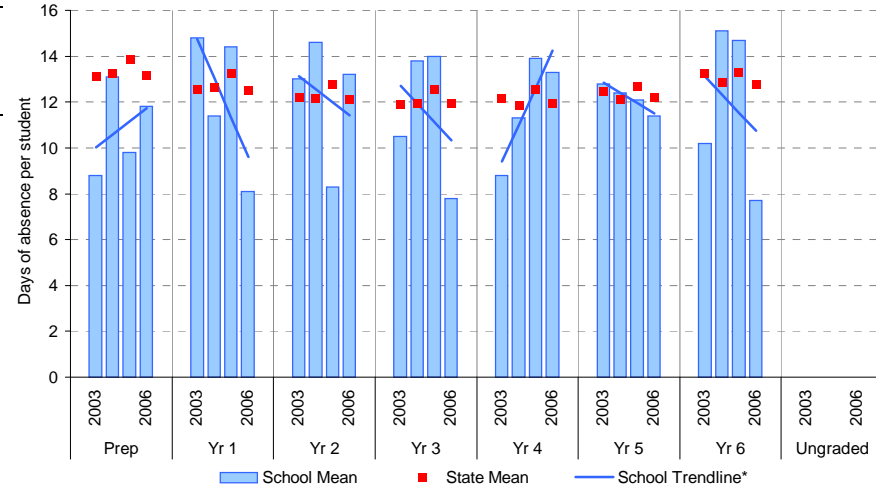
School Mean as percentile against SFO percentile range^



Student Absence (by student headcount, 2003-2006)

| | School | | | | | | | |
|----------|------------|---------------------------|------------|---------------------------|------------|---------------------------|------------|---------------------------|
| | 2003 | | 2004 | | 2005 | | 2006 | |
| | Enrolments | Avg absent days / student | Enrolments | Avg absent days / student | Enrolments | Avg absent days / student | Enrolments | Avg absent days / student |
| Prep | 39 | 8.8 | 46 | 13.1 | 40 | 9.8 | 46 | 11.8 |
| Yr 1 | 42 | 14.8 | 42 | 11.4 | 46 | 14.4 | 39 | 8.1 |
| Yr 2 | 42 | 13 | 50 | 14.6 | 51 | 8.3 | 43 | 13.2 |
| Yr 3 | 39 | 10.5 | 44 | 13.8 | 50 | 14 | 51 | 7.8 |
| Yr 4 | 43 | 8.8 | 48 | 11.3 | 55 | 13.9 | 49 | 13.3 |
| Yr 5 | 43 | 12.8 | 54 | 12.4 | 51 | 12.1 | 51 | 11.4 |
| Yr 6 | 36 | 10.2 | 46 | 15.1 | 58 | 14.7 | 3 | 7.7 |
| Ungraded | | | | | | | | |
| P-6 mean | | 11.3 | | 13.1 | | 12.6 | | 10.9 |

School Mean against State Mean



Improvement

Notes: † Includes non-curriculum absences only (absence codes 200, 201, 202, 203, 205, 206, 207, 208, 209, 210, 211, 300, 401, 500, 700, 800, 804, 805, 900).

* The school trendline is being trialled. It is only plotted when there is data for each calendar year.
 ** FTE = Full Time Equivalent (including part-time and part-year fractions).

^ 2007 benchmarks will be calculated in August, when data from all schools has been submitted.

Parent Opinion

School no: 4877

School name: Keilor Heights Primary School

Explanation: A self-completion questionnaire to obtain parents' opinions of the school. Parents rated a number of statements using a scale where 1=strongly disagree & 7=strongly agree. The statements were grouped into the following categories.

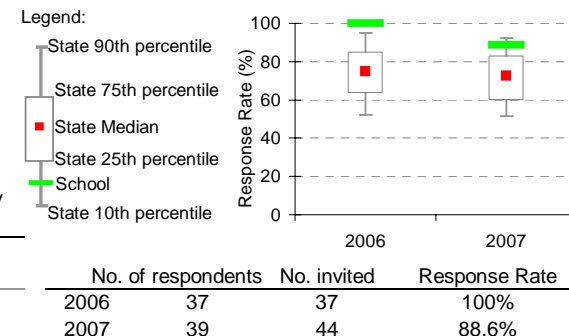
Source of data: Data scanned from questionnaires completed by parents.

| Variable No. | Name | Year | School mean | State Primary median |
|--------------|----------------------|------|-------------|----------------------|
| 1 | School Improvement | 2006 | 5.53 | 5.71 |
| | | 2007 | 5.77 | 5.75 |
| 2 | Approachability | 2006 | 5.65 | 5.81 |
| | | 2007 | 5.71 | 5.82 |
| 3 | Teacher Morale | 2006 | 5.44 | 5.82 |
| | | 2007 | 6.07 | 5.86 |
| 4 | Parent Input | 2006 | 5.29 | 5.59 |
| | | 2007 | 5.44 | 5.62 |
| 5 | Stimulating Learning | 2006 | 5.44 | 5.81 |
| | | 2007 | 6.06 | 5.84 |
| 6 | Behaviour Management | 2006 | 5.22 | 5.51 |
| | | 2007 | 5.40 | 5.54 |
| 7 | Reporting | 2006 | 5.56 | 5.45 |
| | | 2007 | 5.81 | 5.51 |

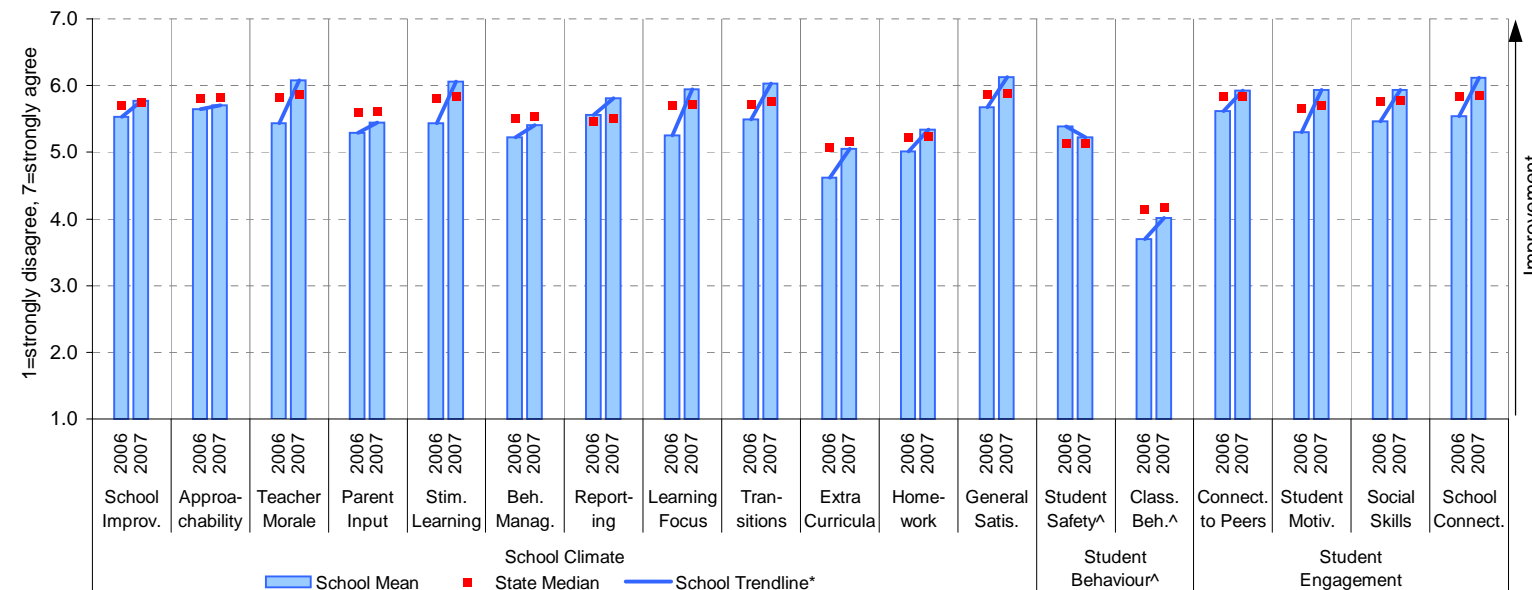
| Variable No. | Name | Year | School mean | State Primary median |
|--------------|----------------------|------|-------------|----------------------|
| 8 | Learning Focus | 2006 | 5.25 | 5.71 |
| | | 2007 | 5.94 | 5.72 |
| 9 | Transitions | 2006 | 5.49 | 5.72 |
| | | 2007 | 6.03 | 5.76 |
| 10 | Extra Curricula | 2006 | 4.62 | 5.07 |
| | | 2007 | 5.05 | 5.17 |
| 11 | Homework | 2006 | 5.01 | 5.23 |
| | | 2007 | 5.34 | 5.23 |
| 12 | General Satisfaction | 2006 | 5.68 | 5.87 |
| | | 2007 | 6.13 | 5.88 |
| 13 | Student Safety^ | 2006 | 5.39 | 5.13 |
| | | 2007 | 5.22 | 5.12 |
| 14 | Classroom Behaviour^ | 2006 | 3.69 | 4.15 |
| | | 2007 | 4.01 | 4.18 |

| Variable No. | Name | Year | School mean | State Primary median |
|--------------|------------------------|------|-------------|----------------------|
| 15 | Connectedness to Peers | 2006 | 5.62 | 5.83 |
| | | 2007 | 5.92 | 5.83 |
| 16 | Student Motivation | 2006 | 5.30 | 5.66 |
| | | 2007 | 5.94 | 5.69 |
| 17 | Social Skills | 2006 | 5.46 | 5.76 |
| | | 2007 | 5.93 | 5.78 |
| 18 | School Connectedness | 2006 | 5.54 | 5.83 |
| | | 2007 | 6.12 | 5.85 |

School response rate** against Primary school distribution



School Mean against Primary State Mean



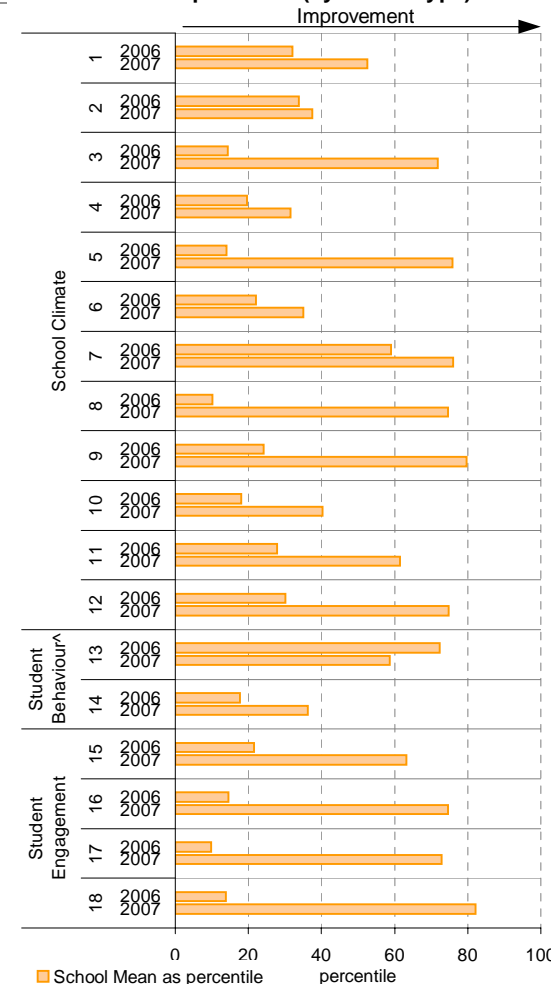
Notes: * The school trendline is being trialled. It is only plotted when there is data for each calendar year.

** If there were 6 or less respondents, table data is not shown for confidentiality reasons. If there were 3 or less respondents, graph data is not shown for confidentiality reasons.

^ Parents' responses to all negatively phrased questions have been reversed for reporting purposes. Across all variables, the higher the score or percentile rank, the more positive parents' perceptions.

^^ Benchmarks available for Primary, Secondary, Pri/Sec, Special and SDS schools.

School Mean as percentile (by school type)



Parent Opinion (pre-2006)

School no: 4877

School name: Keilor Heights Primary School

Explanation: A self-completion questionnaire to obtain parents' opinions of the school. Parents rated a number of statements using a scale where 1=strongly disagree & 6=strongly agree. The statements were grouped into the following categories.

Source of data: From 2004, data scanned from questionnaires completed by parents.

| Year | Number of respondents |
|------|-----------------------|
| 2004 | 132 |
| 2005 | 30 |

| Variable | Year | School Mean | Primary State Mean |
|---------------------|------|-------------|--------------------|
| Quality of Teaching | 2001 | 5.21 | 5.18 |
| | 2002 | 5.38 | 5.21 |
| | 2003 | 5.35 | 5.20 |
| | 2004 | 5.31 | 5.24 |
| | 2005 | 5.32 | 5.28 |

| Variable | Year | School Mean | Primary State Mean |
|------------------------|------|-------------|--------------------|
| Reporting and Feedback | 2004 | 5.25 | 5.15 |
| | 2005 | 5.11 | 5.16 |
| Student Behaviour | 2004 | 5.52 | 5.40 |
| | 2005 | 5.53 | 5.44 |

| Variable | Year | School Mean | Primary State Mean |
|---------------------------|------|-------------|--------------------|
| School / Parent Relations | 2004 | 5.59 | 5.50 |
| | 2005 | 5.62 | 5.51 |
| Extra-Curricular | 2004 | 4.65 | 5.08 |
| | 2005 | 4.93 | 5.07 |

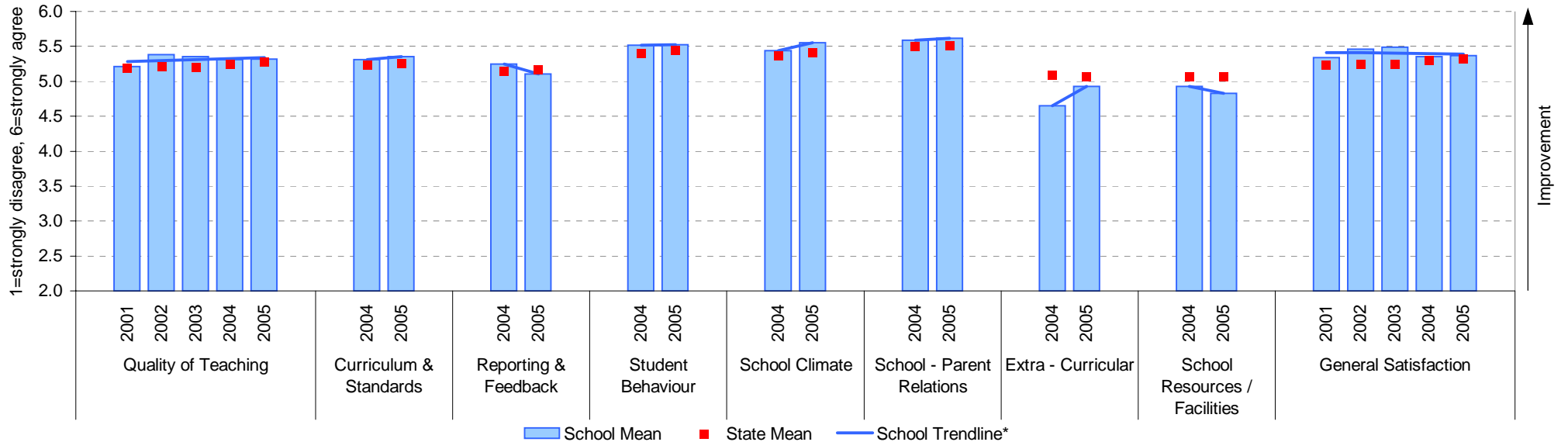
| Variable | Year | School Mean | Primary State Mean |
|----------------------|------|-------------|--------------------|
| General Satisfaction | 2001 | 5.34 | 5.23 |
| | 2002 | 5.46 | 5.25 |
| | 2003 | 5.49 | 5.25 |
| | 2004 | 5.35 | 5.30 |
| | 2005 | 5.37 | 5.33 |

| Variable | Year | School Mean | Primary State Mean |
|--------------------------|------|-------------|--------------------|
| Curriculum and Standards | 2004 | 5.31 | 5.23 |
| | 2005 | 5.35 | 5.25 |

| Variable | Year | School Mean | Primary State Mean |
|----------------|------|-------------|--------------------|
| School Climate | 2004 | 5.44 | 5.37 |
| | 2005 | 5.55 | 5.41 |

| Variable | Year | School Mean | Primary State Mean |
|-------------------------------|------|-------------|--------------------|
| School Resources / Facilities | 2004 | 4.93 | 5.07 |
| | 2005 | 4.82 | 5.06 |

School Mean against Primary State Mean



Notes: * The school trendline is being trialled. It is only plotted when there is data for each calendar year.

^^ State Means available for Primary, Secondary, Pri/Sec, Special and SDS schools.

Staff Opinion

School no: 4877

School name: Keilor Heights Primary School

Explanation: A self-completion questionnaire to obtain the staff's opinions of the school. The survey was administered online using the School Organisational Health Questionnaire.

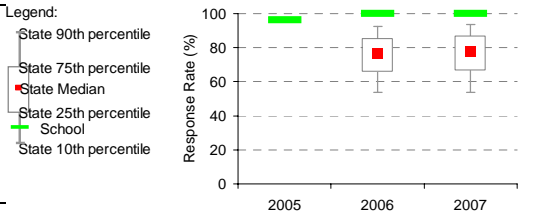
Source of data: Data transmitted from school staff to DEECD via an online survey application.

| Variable | No. | Name | Year | School mean | State Primary median |
|---------------------------------|-----|------|------|-------------|----------------------|
| 1 Individual Morale | | | 2005 | 69.7 | 75.5 |
| | | | 2006 | 73.6 | 75.6 |
| | | | 2007 | 77.8 | 76.8 |
| 2 School Morale | | | 2005 | 67.9 | 77.6 |
| | | | 2006 | 69.3 | 78.1 |
| | | | 2007 | 78.9 | 79.2 |
| 3 Supportive Leadership | | | 2005 | 72.1 | 80.0 |
| | | | 2006 | 73.3 | 80.0 |
| | | | 2007 | 76.8 | 80.6 |
| 4 Role Clarity | | | 2005 | 80.3 | 79.2 |
| | | | 2006 | 74.1 | 79.6 |
| | | | 2007 | 82.2 | 80.1 |
| 5 Professional Interaction | | | 2005 | 76.9 | 80.5 |
| | | | 2006 | 72.2 | 80.7 |
| | | | 2007 | 82.7 | 81.9 |
| 6 Participative Decision-Making | | | 2005 | 73.3 | 74.8 |
| | | | 2006 | 66.8 | 75.1 |
| | | | 2007 | 76.8 | 76.3 |
| 7 Goal Congruence | | | 2005 | 76.0 | 81.4 |
| | | | 2006 | 70.3 | 81.7 |
| | | | 2007 | 80.8 | 82.6 |

| Variable | No. | Name | Year | School mean | State Primary median |
|--------------------------------|-----|------|------|-------------|----------------------|
| 8 Appraisal & Recognition | | | 2005 | 65.8 | 70.5 |
| | | | 2006 | 61.2 | 71.6 |
| | | | 2007 | 75.0 | 73.1 |
| 9 Professional Growth | | | 2005 | 67.7 | 73.8 |
| | | | 2006 | 72.4 | 74.2 |
| | | | 2007 | 81.3 | 76.0 |
| 10 Curriculum Coordination | | | 2005 | 72.4 | 74.6 |
| | | | 2006 | 62.8 | 75.0 |
| | | | 2007 | 75.0 | 75.6 |
| 11 Effective Discipline Policy | | | 2005 | 72.7 | 79.7 |
| | | | 2006 | 66.1 | 79.9 |
| | | | 2007 | 76.6 | 80.9 |
| 12 Student Orientation | | | 2005 | 86.4 | 85.9 |
| | | | 2006 | 81.3 | 86.1 |
| | | | 2007 | 87.9 | 86.6 |
| 13 Student Motivation | | | 2005 | 75.0 | 75.9 |
| | | | 2006 | 69.1 | 76.8 |
| | | | 2007 | 76.5 | 77.9 |
| 14 Student Decision-Making | | | 2005 | 57.4 | 68.4 |
| | | | 2006 | 45.5 | 69.4 |
| | | | 2007 | 47.5 | 71.3 |

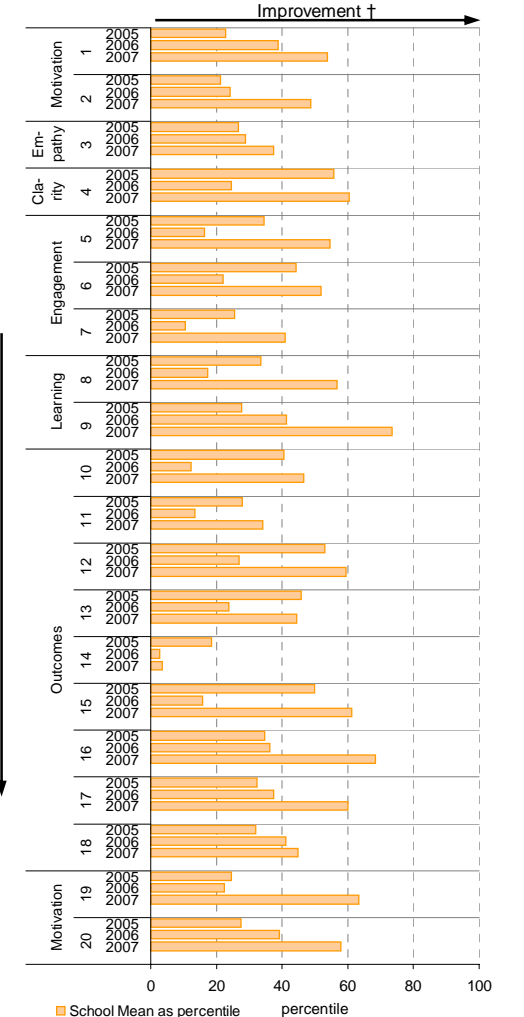
| Variable | No. | Name | Year | School mean | State Primary median |
|---------------------------|-----|------|------|-------------|----------------------|
| 15 Learning Environment | | | 2005 | 80.3 | 80.3 |
| | | | 2006 | 71.7 | 81.3 |
| | | | 2007 | 84.7 | 82.5 |
| 16 Student Misbehaviour | | | 2005 | 30.3 | 22.9 |
| | | | 2006 | 28.6 | 21.7 |
| | | | 2007 | 15.0 | 21.5 |
| 17 Classroom Misbehaviour | | | 2005 | 17.8 | 14.6 |
| | | | 2006 | 16.0 | 13.8 |
| | | | 2007 | 11.8 | 13.3 |
| 18 Excessive Work Demands | | | 2005 | 49.5 | 42.8 |
| | | | 2006 | 46.3 | 42.9 |
| | | | 2007 | 45.1 | 43.2 |
| 19 Individual Distress | | | 2005 | 28.3 | 22.2 |
| | | | 2006 | 28.0 | 21.6 |
| | | | 2007 | 18.1 | 21.1 |
| 20 School Distress | | | 2005 | 37.9 | 29.2 |
| | | | 2006 | 33.1 | 28.8 |
| | | | 2007 | 25.2 | 28.3 |

School response rate** against Primary school distribution

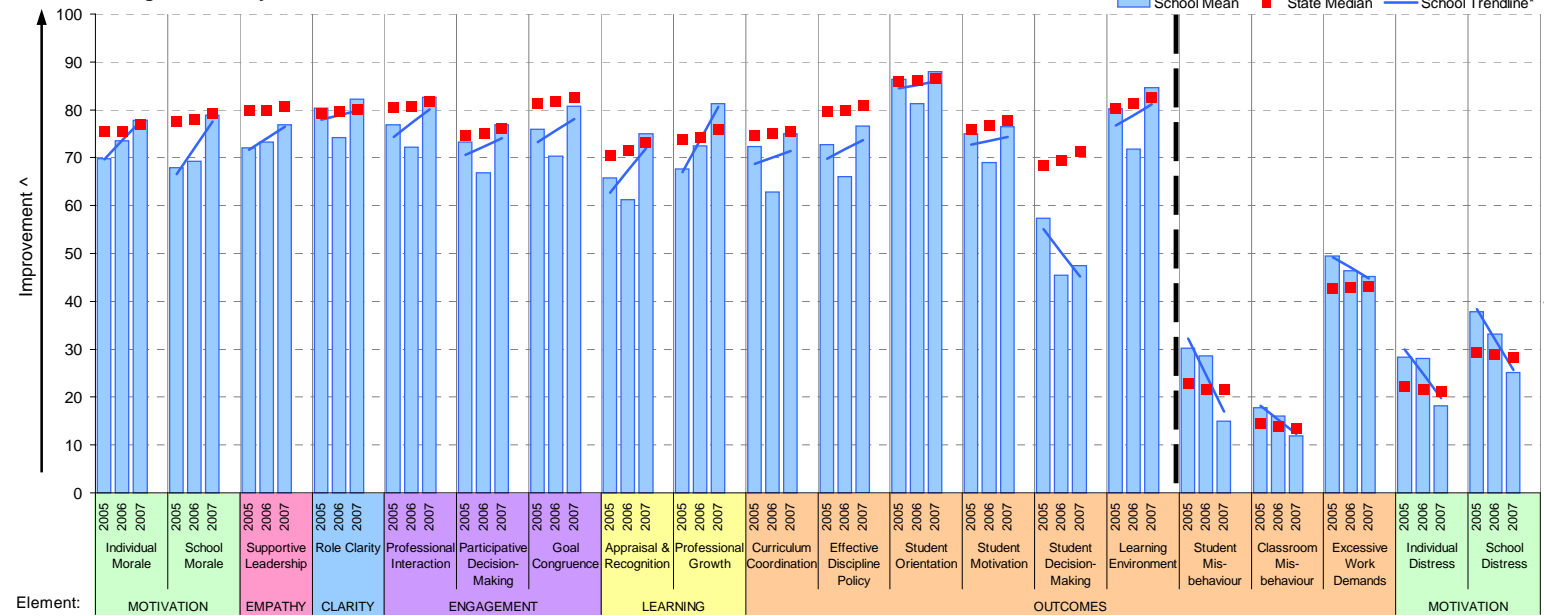


| Year | No. of respondents | No. invited | Response Rate |
|------|--------------------|-------------|---------------|
| 2005 | 26 | 27 | 96% |
| 2006 | 29 | 29 | 100% |
| 2007 | 27 | 27 | 100% |

School Mean as percentile (by school type)



School Mean against Primary State Mean



Notes: * The school trendline is being trialled. It is only plotted when there is data for each calendar year.

** If there were 6 or less respondents, table data is not shown for confidentiality reasons. If there were 3 or less respondents, graph data is not shown for confidentiality reasons.

^ The higher the school mean, the more positive the outcome for variables 1 to 15. The lower the school mean, the more positive the outcome for variables 16 to 20.

† The higher the school percentile, the more positive the outcome for all variables.

^^ Benchmarks are available for Primary, Secondary, Pri/Sec, Special & SDS schools.

Staff Sick Leave

School no: 4877

School name: Keilor Heights Primary School

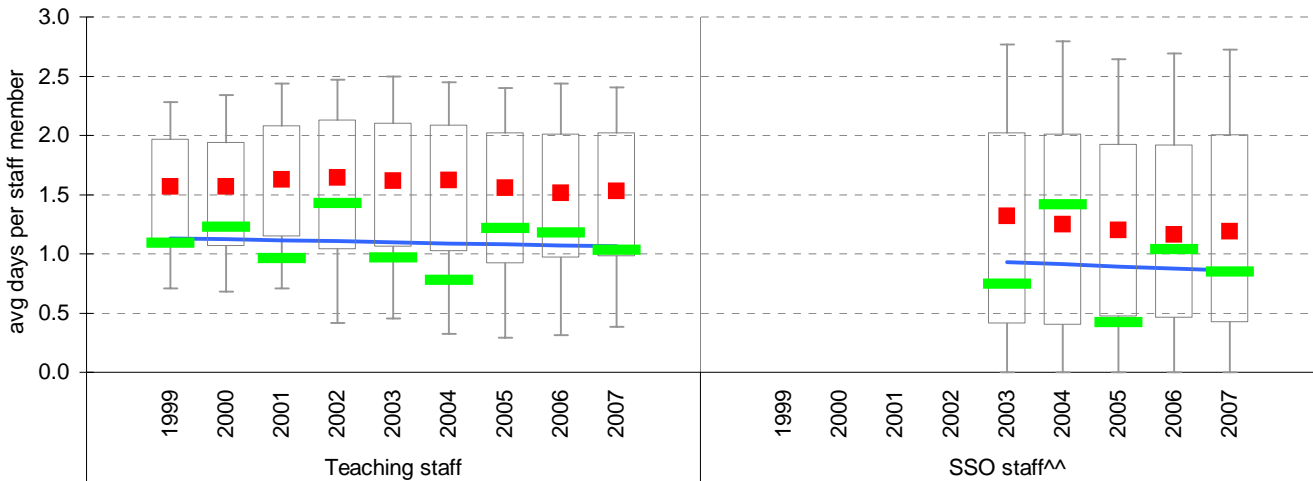
Explanation: The number of non-certificated and total sick leave days taken per staff member. A detailed explanation on how staff sick leave is calculated is provided in the Annual Reports Frequently Asked Questions page of the Standards website (<http://www.sofweb.vic.edu.au/standards/account/arepq.htm>).

Source of data: Human Resources Management System (HRMS)^.

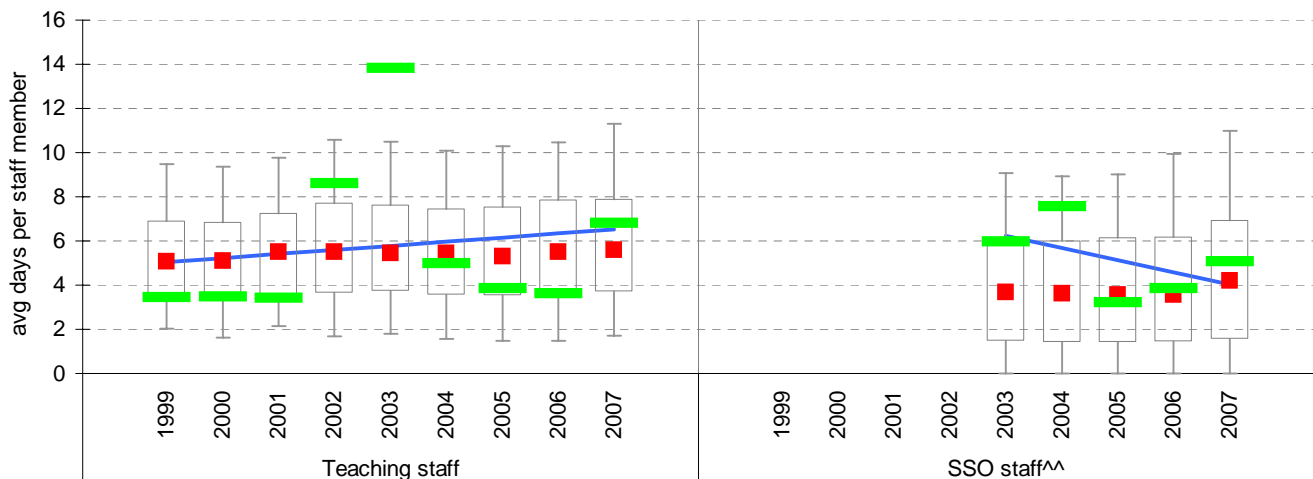
| Staff Type | Non-Certificated sick leave days per staff member^ | | | | | | | | | 2007 State Median |
|------------|--|------|------|------|------|------|------|------|------|-------------------|
| | 1999 | 2000 | 2001 | 2002 | 2003 | 2004 | 2005 | 2006 | 2007 | |
| Teacher | 1.09 | 1.22 | 0.96 | 1.42 | 0.97 | 0.78 | 1.22 | 1.18 | 1.03 | 1.53 |
| SSO^^ | | | | | 0.75 | 1.42 | 0.42 | 1.04 | 0.85 | 1.19 |

| Staff Type | Total sick leave days per staff member^ | | | | | | | | | 2007 State Median |
|------------|---|------|------|------|-------|------|------|------|------|-------------------|
| | 1999 | 2000 | 2001 | 2002 | 2003 | 2004 | 2005 | 2006 | 2007 | |
| Teacher | 3.44 | 3.47 | 3.43 | 8.60 | 13.83 | 5.00 | 3.85 | 3.62 | 6.80 | 5.61 |
| SSO^^ | | | | | 5.97 | 7.57 | 3.21 | 3.84 | 5.08 | 4.20 |

NON-CERTIFICATED sick leave



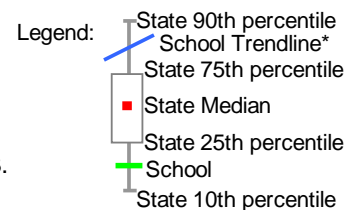
TOTAL sick leave



Note: * The school trendline is being trialled. It is only plotted when there is data for each calendar year.

^ There may be some discrepancy between the results from CASES & those from HRMS. The latter are considered to be more accurate.

^^ Data for SSO (School Services Officer) staff is only available from 2003.



Teaching Staff Retention

School no: 4877

School name: Keilor Heights Primary School

Explanation: The retention rate of teaching staff is determined by matching staff payroll records for the last pay in June of one year (Year A), to the last pay in June of the following year (Year B).

Source of data: Human Resources Management System (HRMS).

Teaching Staff*

| Year A | Year B | Number of Teaching Staff in Year A | Number of Teaching Staff retained in Year B | Teaching Staff Retention Rate | Statewide Average |
|--------|--------|------------------------------------|---|-------------------------------|-------------------|
| 2005 | 2006 | 23 | 19 | 83% | 87% |
| 2006 | 2007 | 22 | 17 | 77% | 86% |

Of the 23 teaching service staff at June 2005 (including those on leave without pay), 19 or 83% were still at the school at June 2006. This figure across all Government schools was 87%.

Of the 22 teaching service staff at June 2006 (including those on leave without pay), 17 or 77% were still at the school at June 2007. This figure across all Government schools was 86%.

Ongoing Teaching Staff*^

| Year A | Year B | Number of Ongoing Teaching Staff in Year A | Number of Ongoing Teaching Staff retained in Year B | Ongoing Teaching Staff Retention Rate | Statewide Average |
|--------|--------|--|---|---------------------------------------|-------------------|
| 2005 | 2006 | 21 | 18 | 86% | 91% |
| 2006 | 2007 | 20 | 16 | 80% | 90% |

Of the 21 ongoing teaching service staff at June 2005 (including those on leave without pay), 18 or 86% were still at the school at June 2006. This figure across all Government schools was 91%.

Of the 20 ongoing teaching service staff at June 2006 (including those on leave without pay), 16 or 80% were still at the school at June 2007. This figure across all Government schools was 90%.

Notes: * Teaching staff includes Principal class, Teacher class and Instructor class. Teaching staff employed as visiting teachers, guidance officers, curriculum consultants, etc. are excluded as they are not charged to a particular school.

^ Not including fixed term staff, except for where staff had changed from ongoing in Year A to fixed term in Year B.

Bank Balances

School no: 4877

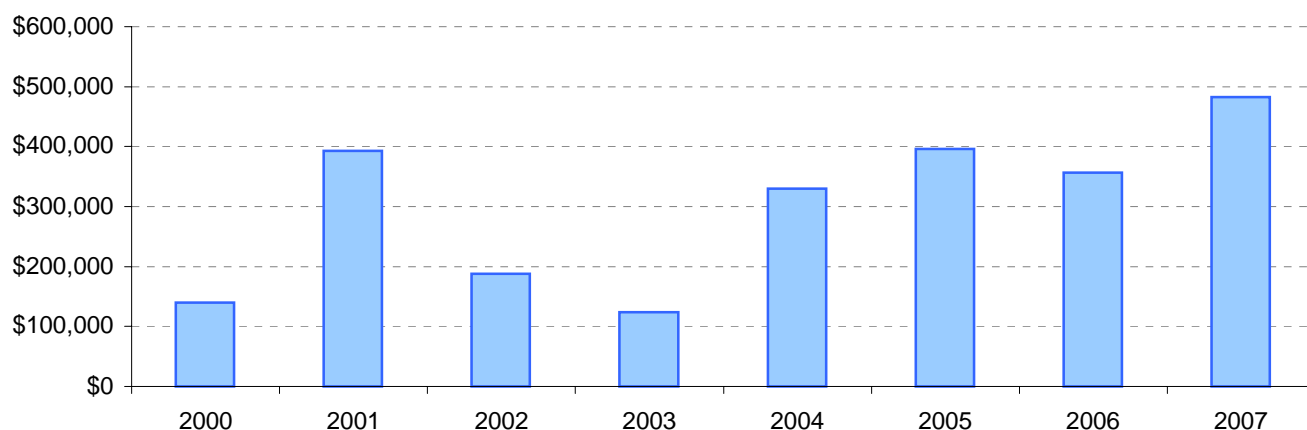
School name: Keilor Heights Primary School

Explanation: Account balance figures include official and investment accounts, and are calculated by taking the opening balance at 1st January plus the total receipts at 31st December less total payments at 31st December.

Account Balances (Official plus Investment Accounts)

| | | | |
|------|-----------|------|-----------|
| 2000 | \$140,050 | 2004 | \$330,082 |
| 2001 | \$393,118 | 2005 | \$396,328 |
| 2002 | \$187,798 | 2006 | \$356,101 |
| 2003 | \$124,226 | 2007 | \$482,124 |

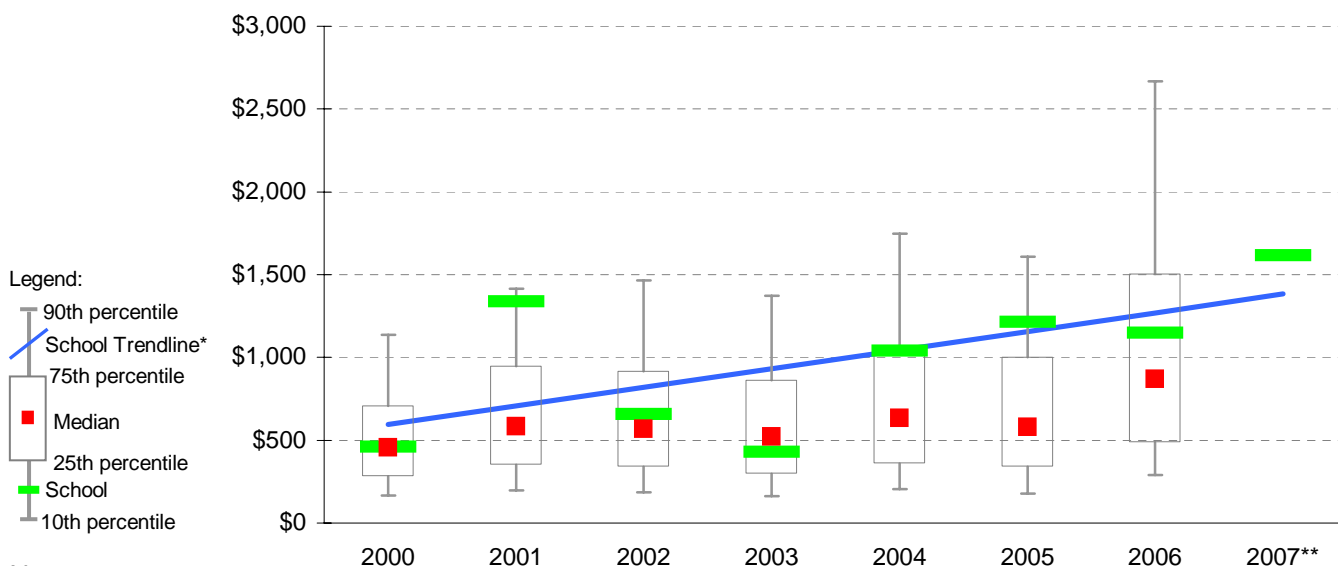
Account Balances



Account Balances (Official plus Investment Accounts) per student[†]

| | | | |
|------|---------|------|---------|
| 2000 | \$459 | 2004 | \$1,041 |
| 2001 | \$1,337 | 2005 | \$1,216 |
| 2002 | \$656 | 2006 | \$1,149 |
| 2003 | \$430 | 2007 | \$1,618 |

School account balances per student enrolled in August census plotted on state Primary benchmarks[^]



Notes:

* The school trendline is being trialled. It is only plotted when there is data for each calendar year.

** 2007 benchmarks will be calculated in August, when data from all schools has been submitted.

† The account balance per student has been calculated to enable some comparison to be made between schools.

^ Benchmarks for primary, secondary, pri/sec, SDS, special and language schools.